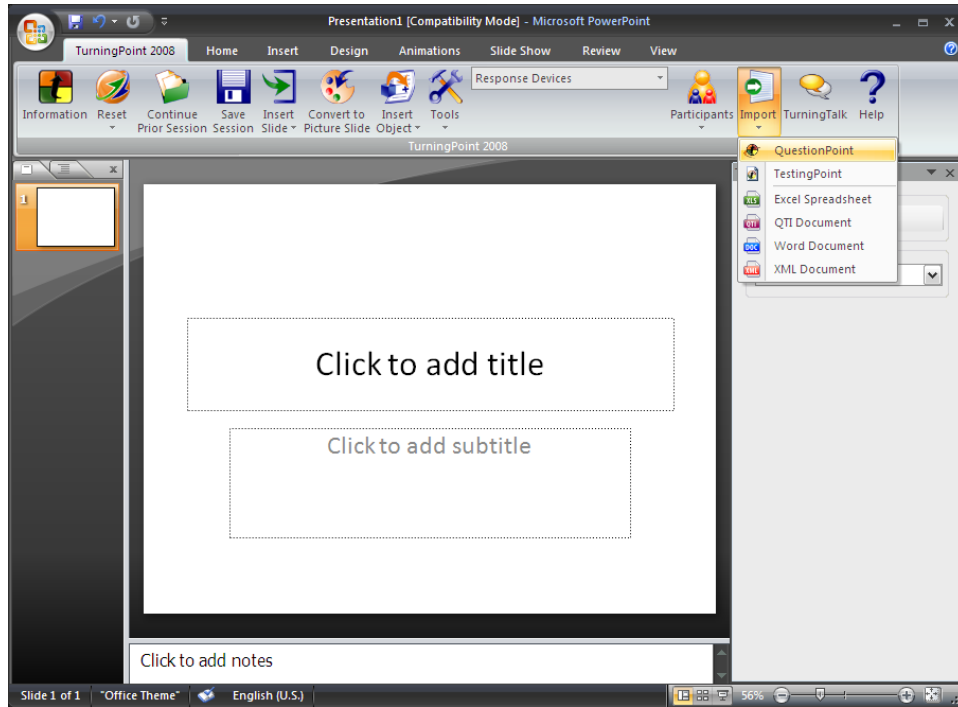


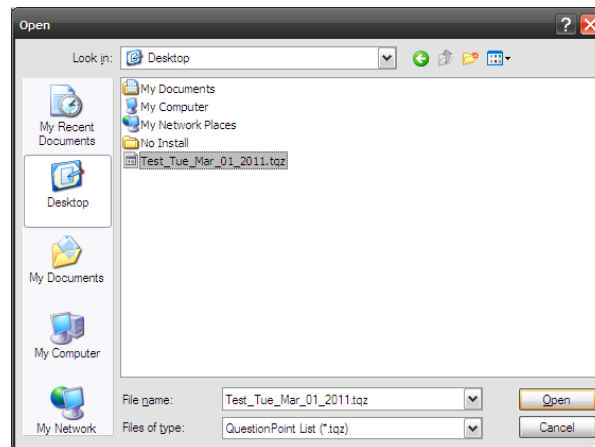
Using QuestionPoint with TurningPoint PC

The following PDF tutorial has been provided for your convenience. Online flash tutorials are also available at www.TurningTechnologies.com/tutorials.

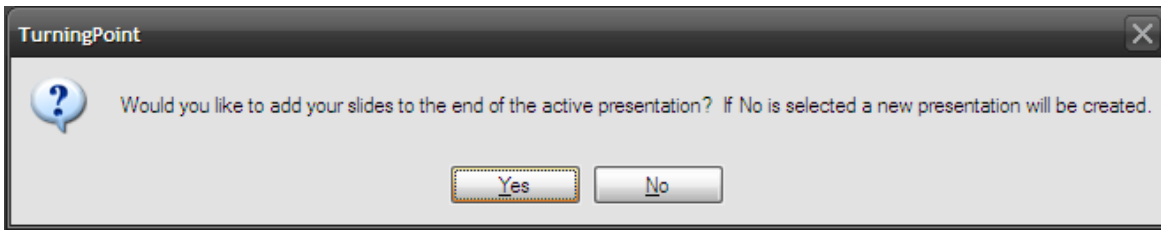
- 1 In TurningPoint, click **Import** and select **QuestionPoint**.



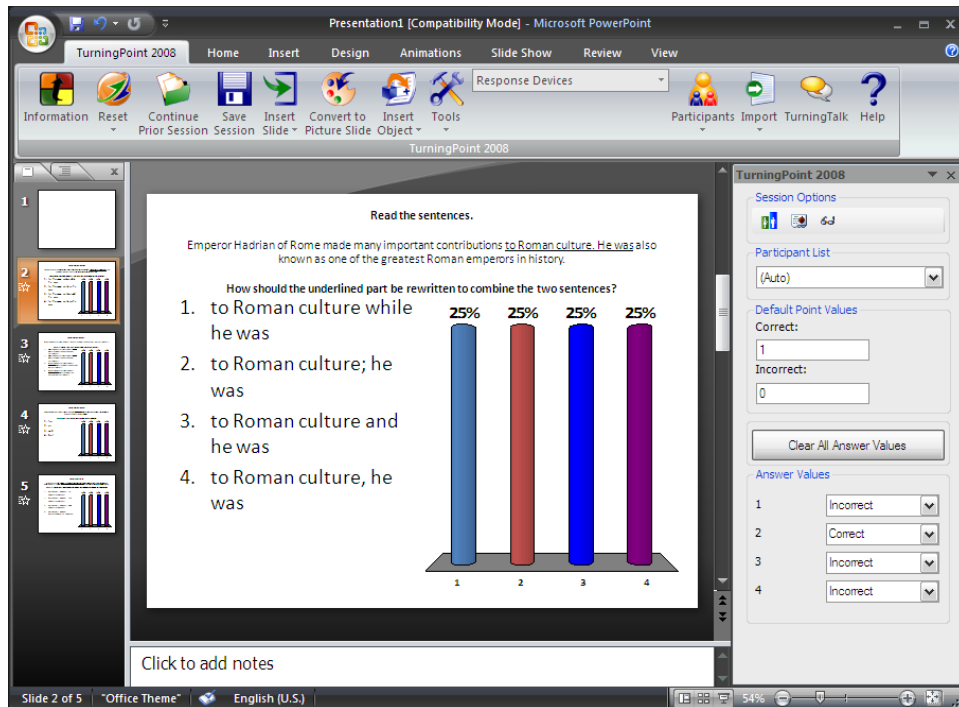
- 2 Navigate to the save .tqz assessment and click **Open**.



- 3 Select where you would like to place your questions.



- 4 The QuestionPoint assessment items will now be imported into the TurningPoint presentation.



Note

If any of your assessment items contain answers with multiple images or images with text, you may need to manually format the placement of images.