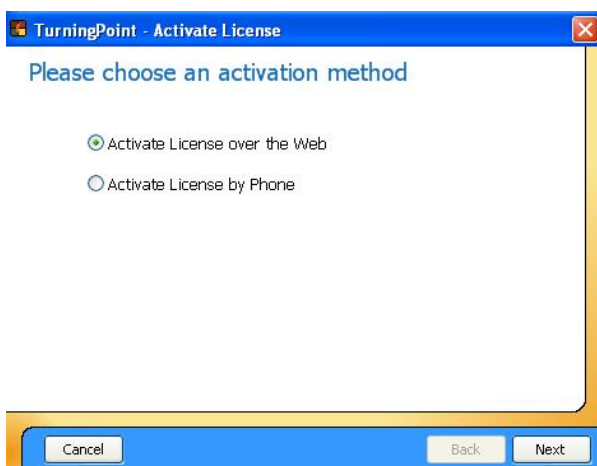


## Activate TurningPoint in Evaluation Mode

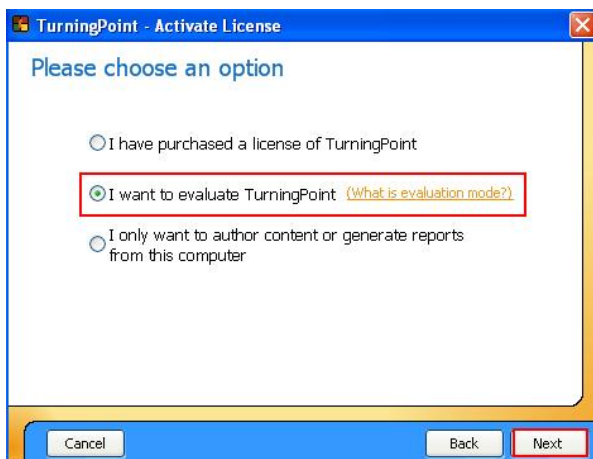
1. Make sure the receiver is unplugged from the computer
2. Click on the Activate/Upgrade TurningPoint button



3. Choose your method of activation (Phone or Internet) and click **Next**



4. Choose "I want to evaluate TurningPoint" and click **Next**



5. Fill out the survey information and click **Next**
6. Click **Finish**
7. Plug the receiver in.
8. Click on the Lightning Bolt on the TurningPoint toolbar
9. Change the range to include the full license capacity that the license on your receiver will accept.