

TurningPoint Quick Start Guide

Installing TurningPoint Software

1) Install TurningPoint in one of two ways:

- Download TurningPoint from www.TurningTechnologies.com/Downloads.
- Insert your TurningPoint CD into your computer's CD-ROM drive.

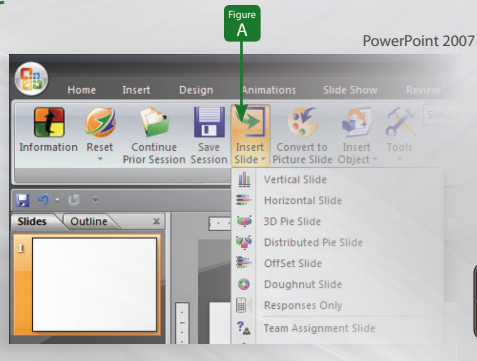
2) Follow the on-screen instructions to begin the installation wizard.

Note: If you have an old version of TurningPoint installed on your computer, you must first remove it before installing the new version. You must be logged into your computer as the local administrator before installation.

Creating an Interactive PowerPoint® Slide

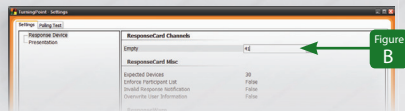
- From the TurningPoint Toolbar, click **Insert Slide** and select a **Slide Type**. (Figure A)
- Enter your question and answer choices into the appropriate text boxes.

Tip: Enhance your presentation with added features in the **Insert Object** dropdown menu on the TurningPoint Toolbar.



Hardware Setup

- 1) Plug in your Receiver.
- 2) Click **Tools** on the TurningPoint Toolbar and select **Settings**.
- 3) Click **Response Device**. Under ResponseCard Channel, click the number to the right to select your desired Receiver Channel. (Figure B)
- 4) By Default all ResponseCards are set to **Channel #41**.

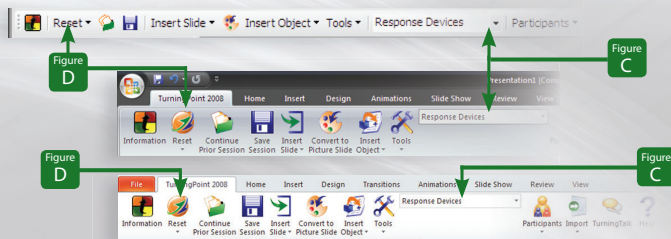


Polling with Response Devices

- 1) Open TurningPoint and open an Interactive Presentation.
- 2) Make sure **Response Devices** is selected in the drop down menu on the TurningPoint Toolbar. (Figure C)
- 3) To prep slides for polling, reset your Session by clicking **Reset** on the TurningPoint Toolbar (Figure D) and select **Session**.
- 4) From the PowerPoint toolbar, launch your presentation in **Slide Show** mode. Click to advance through the presentation.
- 5) Once the interactive slide appears, participants can answer the question. Polling will remain open until you advance to display the graphical results.

Tip: All ResponseCards are set to Channel #41

TurningPoint®
Ribbon for Office 2003



TurningPoint®
Ribbon for Office 2007

TurningPoint®
Ribbon for Office 2010