

TestingPoint 1.2 Release Notes

Software Name: TestingPoint 1.2
Release Date: 04-29-2010
Version: 1.2.0.117
Support: support@turningtechnologies.com
Languages: English
Overview:

Minimum System Requirements:

- Microsoft Windows XP, Vista, or 7 32-bit or 64-bit OS
- Office XP, 2003, or 2007
- Intel or AMD 600 MHz class processor (1 GHz or higher recommended)
- 256 MB RAM
- 60 MB hard disk space (an additional 32 MB is required if you do not have Microsoft .NET Framework 2.0 installed)
- 1024x768 resolution at 32-bit color or higher
- Standard USB 1.1/2.0 port (for USB-based hardware devices)

1.2.0.117

Fixes:

- A custom standard assigned to a question was not reflected in Turning Reports.

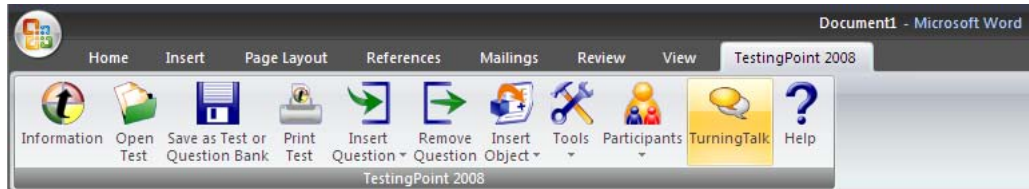
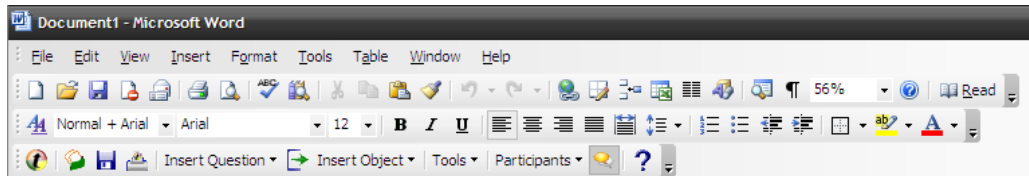
1.2.0.99

Fixes:

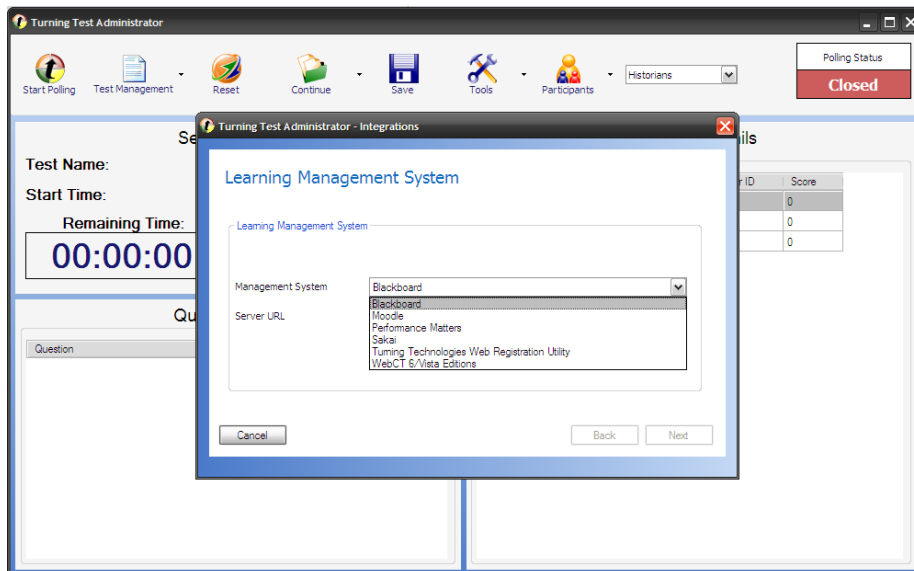
- Parser documents created in Microsoft Word were not being recognized in the Turning Parser
- Three or more randomized tests were not being graded correctly
- If a file name contained a "." the .tpz was not being included when the session was saved
- In some circumstances the Test Administrator would stop accepting test results, but the ResponseCard XR would appear as though the tests were successfully submitted
- When running a session with the Participant List set to Auto, the User Data was not displayed in the Reports

Enhancements:

- Supports new RF2 receiver (HID)
- Direct link to TurningTalk inside the product

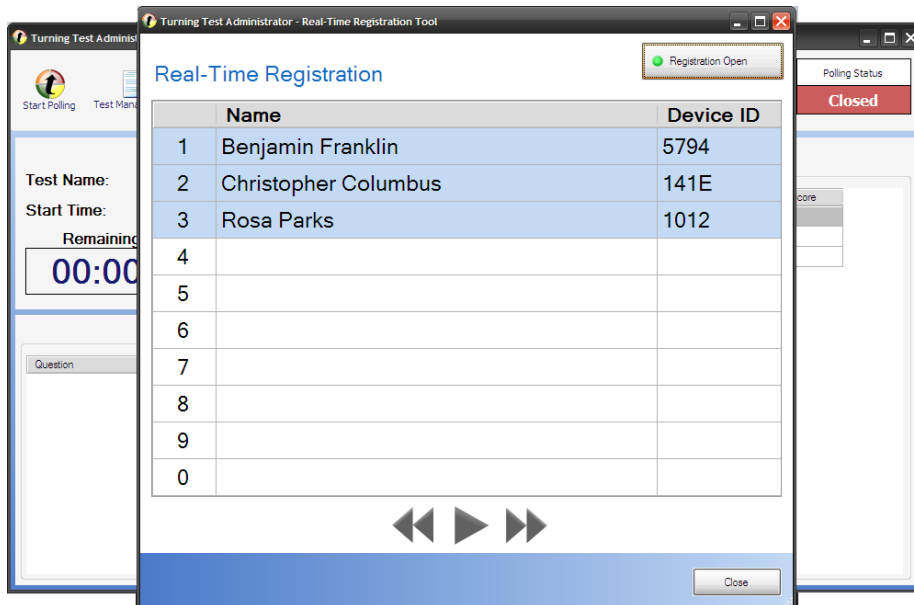
Office 2007**Office 2003**

- Added LMS Integration support

Test Administrator > Tools > Integrations

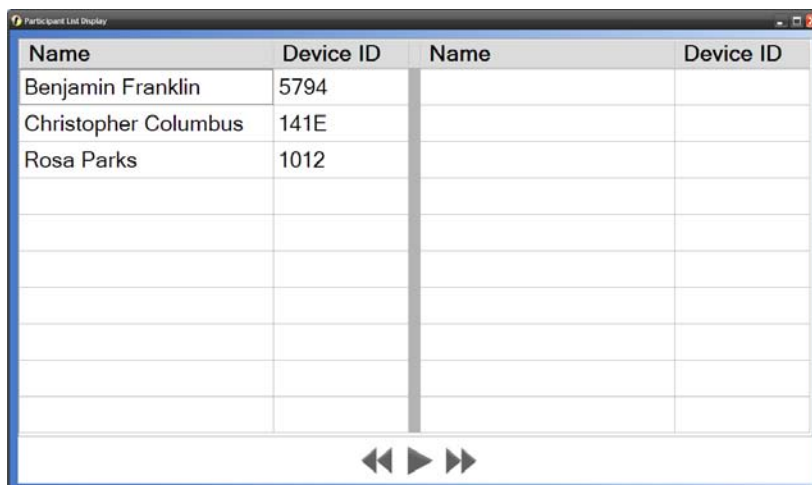
- Real-time registration tool – Allows students to register their devices to TestingPoint in real-time during class

Test Administrator > Participants > Real-Time Registration Tool



- Save .csv along with the .tpz - saves a csv file in the format of the LMS you have chosen when saving a session for easy upload to LMS
- Move “Comma delimited” to first option in text file import
- Participant list display – shows the current participant list loaded similar to the real-time registration tool

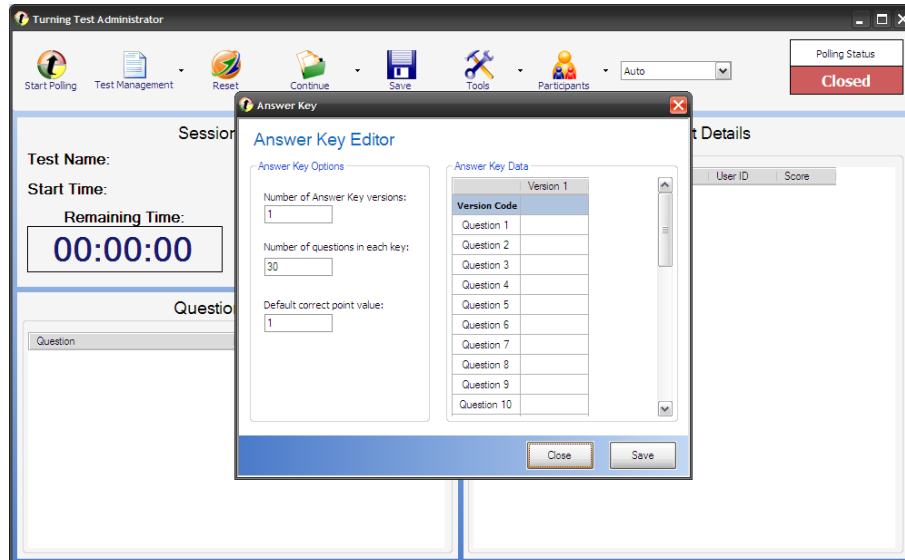
Test Administrator > Participants > Participant List Display



- Numeric Response Only Question – Similar to FIB question but will only accept numeric responses and will be graded upon the range set up (e.g. anything between 1 and 10 is correct)

- Improved Answer Key Interface

Test Administrator > Test Management > Answer Key > Create Answer Key



1.1.0.9204

Enhancements:

- Added language support for Dutch, French, German, Portuguese and Spanish.

1.1.0.8228

Fixes:

- With the language set to Dutch, generating a report caused an error
- When copying and pasting a multiple choice question repeatedly the question table became fragmented and caused an error when opening the Test Administrator
- Importing all questions from a saved question bank would cause an error
- Respondus QTI files were causing an error when using the Turning Parser
- When creating a test adding a question towards the end of the page would split the question table
- Corrected language support issues for French, German, Spanish, Dutch and Portuguese
- Could not send user data when participant list was set to "Anonymous"

Enhancements:

- New Test Administrator
- Ability to add/remove answers to test questions
- Multiple Answer Key support
- Ability to randomize tests
- Ability to assign point values ranging from 10000 to -10000
- Ability to change the order of question types
- Added Windows 64-bit support

1.0.0.8224**Fixes:**

- With the language set to German, opening the Settings window while a test was not opened caused an Unhandled Exception Error
- With the language set to French, the Percentiles Report did not have proper spacing in the report headers

Enhancements:

- Installs latest language files to the users machine
- Includes translated help files (.chm)
- Sets application language to the selected language

1.0.0.8106**Fixes:**

- In previous versions, sending a blank test to the Test Administrator from the ResponseCard XR caused an error. The Test Administrator now ignores blank tests in version 1.0.0.8106
- In Office 2002(XP) pressing the Tab key while in a question table would continue scrolling through pages of the test.
- When using multiple RF Receivers the channels would potentially swap with one another

Enhancements:

- The Test Administrator now includes a session backup feature, which can be manually extracted from C:\Documents and Settings\