

TurningPoint 4.2.3 32-bit (PC) Release Notes

Software Name: TurningPoint 4.2.3 32-bit (PC)
Release Date: 08-19-2010
Version: 4.2.3.231
Support: support@turningtechnologies.com
Languages: English
Overview:

Minimum System Requirements:

- Microsoft Windows XP, Vista, or 7 32-bit or 64-bit OS
- Office 2003, 2007 or 2010 32-bit only
- Intel or AMD 600 MHz class processor (1 GHz or higher recommended)
- 256 MB RAM
- 60 MB hard disk space (an additional 32 MB is required if you do not have Microsoft .NET Framework 2.0 installed)
- 1024x768 resolution at 32-bit color or higher
- Standard USB 1.1/2.0 port (for USB-based hardware devices)
- Ethernet or 802.11 compatible wireless network card (for ResponseWare use)

4.2.3.231

Fixes:

- Reporting issues with Office 2003 were fixed.
- Difficulty and Discrimination Index reporting calculation.

4.2.3.225

Fixes:

- When parsing slides with the formatting set to 16:9 the chart and answer text box was being placed too high on the slide.
- Sending a text response to a Number Slide question was causing an error.
- Office 2007: When resetting a presentation that contained non-TurningPoint animations, the animations would double or triple.
- If a design template was set for the presentation and the countdown timer was active, responses were not appearing in the Responses box on the showbar.
- Title/Text boxes were not inserted in the position set by the Master Slide.
- In the session editor, if you changed the answer value of a Numeric Response question to correct, in the reports on the participants that answered the exact acceptable value will receive points, participants that answered with in the specified range would not.
- Assigning Device IDs via the Real-Time Registration Tool would override team assignments in the participant list.
- An error would occur if a chart type was set to Correct/Incorrect and an available answer was changed from incorrect to correct in the settings window.
- Office 2007: After polling a presentation the animations would appear out of order and some animations would be duplicated.
- Office 2007: If a countdown timer and a rotating table were placed on the same slide, the countdown timer would end prematurely and close polling.
- Fastest Responder slides were not displaying the correct participants.
- When editing a TestingPoint session in the TurningPoint session editor, changing an answer value would result in an error.
- Attempting to export session data from a session that contained a Short Answer question type would result in an error.
- On the Racing Leader Balloon Slide, the images would not appear if the setting "Points to Win the Race" was set to zero.
- Office 2007: When slides were set to auto advance and review only, running the presentation then resetting it would cause the chart and countdown timer animations to be reversed.

Known Issues:

- Office 2010: When editing a TurningPoint chart object you must select "Use Existing." If "Convert" is selected the chart will be demoted to a regular PowerPoint chart and a TurningPoint chart will need to be re-inserted.
- If the *Invalid Response Notification* setting is set to True, and you are polling a multiple response question with a ResponseCard XR, the responses must be sent individually.

Enhancements:

- Added support for Microsoft Office 2010
- Standards are now available through a web service
- Added a Difficulty and Discrimination Index Report
- Results by Question Report now includes information from the Priority Ranking Slides

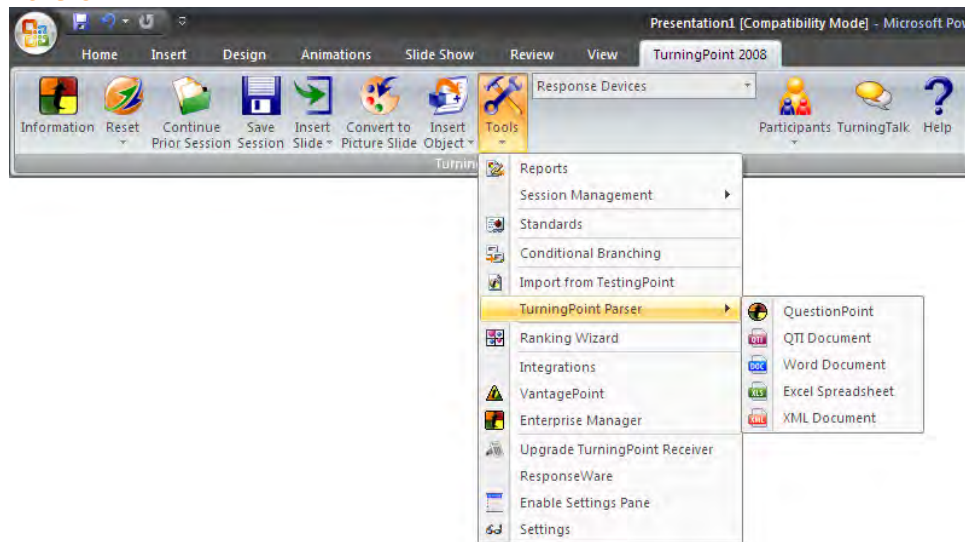
- New Export Schemes for: Gradebook, and ProgressBook

User Interface Changes:

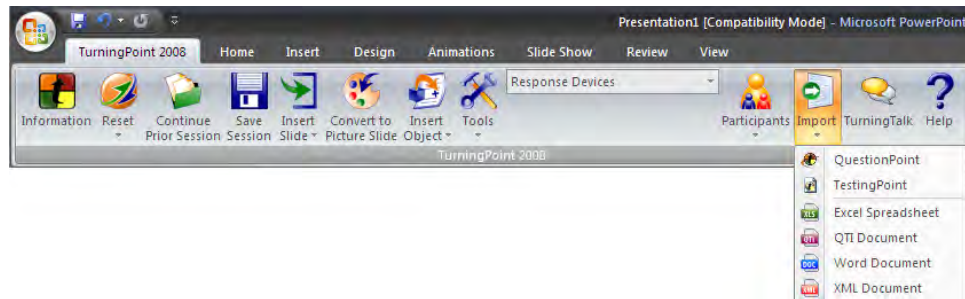
- Moment to Moment Scale has been changed from -2 to 2, the scale is now labeled from 1 to 5.
- When opening TurningPoint in Office 2007 and Office 2010, the TurningPoint tab is automatically displayed and is the first tab on the ribbon.
- New button on the TurningPoint Toolbar for parsing slides

OFFICE 2007

Version 4.2.2

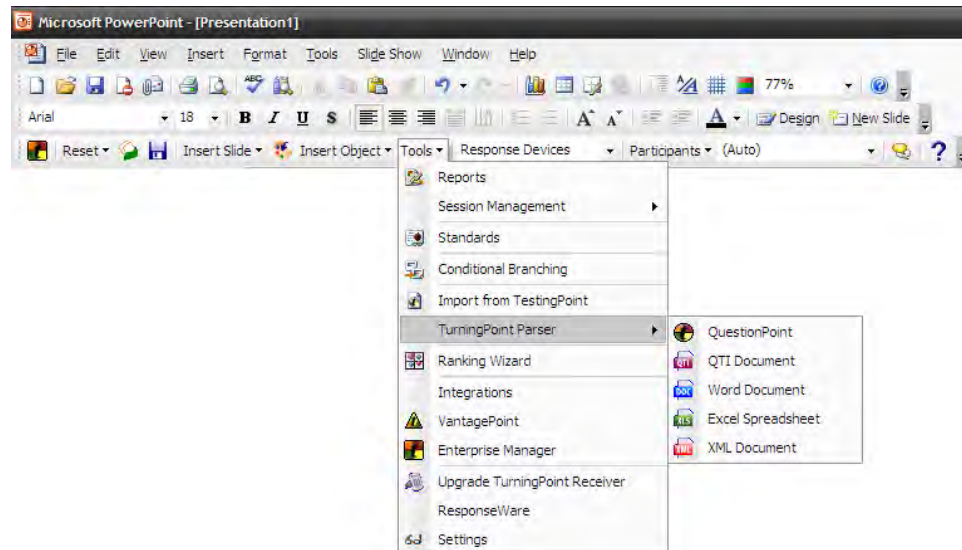


Version 4.2.3

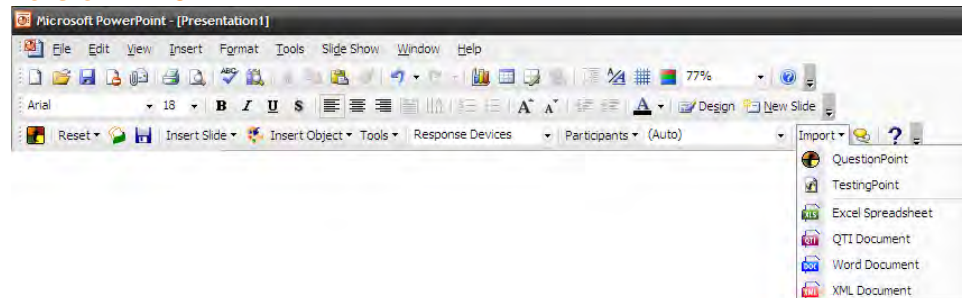


OFFICE 2003

Version 4.2.2



Version 4.2.3

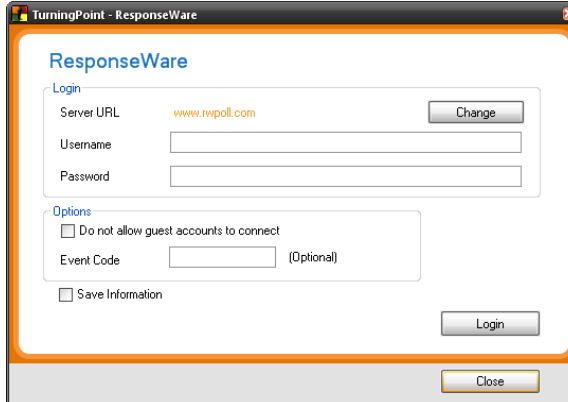


- Response Tables were removed from the Objects sub-menu and replaced with a Grid option.
- Options for countdown timers have been removed. A single countdown timer option is available. To increase or decrease time, mouse over the timer to display the controls.

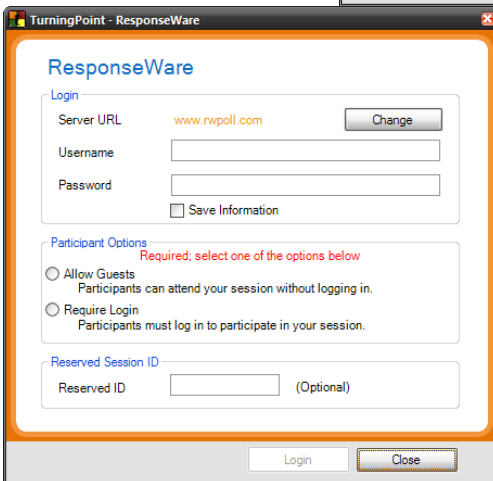


- The ResponseWare login screen has been updated. The Event Code option has been removed and replaced with a Reserved Session ID option. A Participant Options section has also been added.

Version 4.2.2



Version 4.2.3



4.2.2.21

Fixes:

- Non-TurningPoint custom animations would duplicate/triplicate themselves after running or resetting a session.
- QuestionPoint files that contained questions with tables were not being read properly by the parser.
- When in the session editor, changing an answer value for a question from a TestingPoint session would cause an error.

Enhancements:

- Moodle LMS integration
- Performance Matters integration

4.2.1.9293

Enhancements:

- Enabled Moodle Support

4.2.1.9265**Enhancements:**

- CSV Export Scheme
- Headers on Export Wizard
- Unified LMS Import/Export Wizard
- QTI Parser now supports Respondus and D2L formats
- Performance Matters data export is now available
- Added QuestionPoint Web support
- Single Sign On to LMS is now part of the Integrations Wizard, it is no longer a separate window

4.2.0.9317**Fixes:**

- Emailing grades when exporting to WebCT with an older session, caused an error.
- When exporting the current session to Blackboard the Max Value was not updated.
- Downloading a Participant List from Web Registration would not download the User Data field.
- Selecting the "Click Here" link in the 3D sample chart window would open a new window each time the link was clicked.

Enhancements:

- Added language support for: Czech

4.2.0.9287**Fixes:**

- Editing session answer values was not reflected in the settings window.
- Parsing a blank ZIP file gave an "Invalid" error message. Message text now reads "The file contains an invalid format."
- If a slide contained a rotating or fixed table and an animated 2D/3D Chart, the slide had to be reset twice for the charts to visually be set back to "0."
- For a Numeric Response slide, acceptable values were displayed as "other" in the Reports.

Enhancements:

- Added language support for: Dutch, French, German, Spanish, Portuguese, Japanese, Korean, Russian

4.2.0.9210

Fixes:

- If a Participant List was selected that did not contain both a first and last name entry the Real-Time Registration Tool would not recognize the selected Participant List.
- TurningPoint would close when attempting to "Upgrade a Receiver."

Enhancements:

- RF2 receiver support
- TurningTalk link
- Supports Sakai and Blackboard 9.0 LMS
- Real-time registration tool - Allows students to register their devices to TurningPoint in real-time during class
- Anonymous slide button on showbar - convert existing slide to anonymous or insert an on the fly slide as anonymous
- Participant list display - shows the current participant list loaded similar to the real-time registration tool
- Numeric Response Only Question - Similar to Fill in the Blank question but will only accept numeric responses and will be graded upon the range set up (e.g. anything between 1 and 10 is correct)

Known Issues:

- Teachers Assistant access to Sakai integration is currently pending with Agilearn and we are awaiting a fix. Due to the timing this will not make it into 4.2, but should be remedied by 4.2.1.

4.1.0.9020

Fixes:

- Sessions that contained incorrect point values were not calculated correctly in the Participant Merge feature.

Enhancements:

- **Expanded Supported Operating Systems**
Windows XP and Vista 64-bit
- **Gaming Capabilities**
Racing Leader board
MVP by Team Slide
Wager Slide

- **Charting and Results**
"Apply All" option for Answer Bullet Format
Responses Only Slide
Animated 2D/3D charts
- **Comparative Links**
Ability to change comparative slide chart colors
Comparative Link Report
Add labels to comparative link slide legends
Enforce link order through the User Interface
Separate Comparative Links Graph Slide
- **Slide Settings**
Add right-click ability to mark a slide as demographic
- **Action Pane (Office 2007 only)**
Combined Participant List and Question Action Panes
Point Value and Correct/Incorrect options
Demographic Checkbox
Hyperlink to "More Slide Settings"
Hyperlink to "Presentation Settings"
The current slide's standards view
Hyperlink to Standards selection
- **Gaming Capabilities**
Team Leader Board Rotation
- **Charting and Results**
Default axis labels bullets instead of Response Choice aliases
Increased readability of the Demographic Comparison Slide
Improved slide object positioning
- **Comparative Links**
Swap the order in which the comparative data is displayed in the charts

4.0.0.8224

Enhancements:

- Installs latest language files to the users machine
- Includes translated help files (.chm)
- Sets application language to the selected language

4.0.0.8214

Fixes:

- Fixed issue with demographic comparison charts.
- In Office 2007 in the task pane, Import a List, opened to the wrong default location.
- Answering a Fill in the Blank question with ResponseWare Web with a blank response would cause the table not to update and you were unable to repoll unless you went to the next slide and came back.
- In the Settings window, the Apply All button did not apply changes to the current presentation.
- Switching from a percentage count to response count on the Ranking Wizard Chart would cause an error.
- Generating Percentile Reports would cause an error.

4.0.0.8210

***Note: Version 4.0.0.8210 is a domestic, English version only. The official international release of TurningPoint 2008 will follow this release in the third quarter.**

Fixes:

- Added ResponseWare Web Support.
- Improved response time. 12,000 responses received in 7-8 seconds.
- New chart behavior. When charts are inserted via the "Insert Object" menu, no objects on the slide are moved/formatted. Only the chart object is modified. This includes all chart types except Offset.
- Presentations that contained hyperlinks would sometimes cause TurningPoint to crash.

- When deleting a Participant List, if the list had a long name, horizontal scroll bars were not available.
- In Office 2007, sometimes the charts would appear with a "striped" affect.

4.0.0.7323

Fixes:

- If you inserted a blank in the answer text box and click out of it to let the chart update, TurningPoint would freeze.
- Inserting questions from QuestionPoint would create a blank answer option in the data slicing menu.

Enhancements:

- Added display results for fill in the blank slides

4.0.0.7268

Fixes:

- Documents with a .docx extension were not recognized by the parser.
- TestingPoint files were not able to be imported into TurningPoint.
- While the parser was creating the TurningPoint slides and the program was closed, you would get an error.
- If a Moment to Moment slide was the first slide in the presentation, the chart would not update.
- If TurningPoint was closed while "Current Session" was selected in the Reports window, you would receive an error when clicking between the report tabs.

Enhancements:

- Vista 32 bit support
- Office 2007 support
- Enhanced response device detection
- RCXR support
- Movable showbar
- User friendly settings
- Dynamic participant lists
- Added support to merge sessions based on participants
- Add/Remove groups or fields from the participant information screen
- Allow users not in the participant list to participate
- Custom save locations for sessions
- Picture slide enhancements (right-click support)
- Built-in testing standards
- Smarter conditional branching
- Negative point value support
- Added MP3 capability to countdown sounds
- Enhanced reporting
- Excel parser
- VantagePoint integration
- TestingPoint 2008 support
- QTI support