

TurningPoint AnyWhere 2.3 (PC) Release Notes

Software Name:	TurningPoint AnyWhere 2.3 (PC)
Release Date:	07-30-2010
Version:	2.3.0.210
Support:	support@turningtechnologies.com
Overview:	
Languages:	English

Minimum System Requirements:

- Microsoft Windows 32 or 64 bit XP, Vista or 7*
- Intel or AMD 600 MHz class processor (1 GHz or higher recommended)
- 256 MB RAM
- 60 MB hard disk space (an additional 32 MB is required if you do not have Microsoft .NET Framework 2.0 installed)
- 1024 x 768 resolution on a 32-bit color or higher
- Standard USB 1.1/2.0 port (for USB-based hardware devices)
- Ethernet or 802.11 compatible wireless network card**
- Requires the RF or IR Receiver or an active ResponseWare account

*Windows 7 is only compatible with the non-installed version of the application.

**Required if ResponseWare is used.

- Customers using a ResponseCard Receiver with a part number on the back label of “RRRF-01” or “RRLR-01” and have never had any Turning Technologies product installed on the computer, must run the ftdi.exe file located in **C:\Program Files\Turning Technologies\TurningPoint AnyWhere 2008** or the specified download location in order to use the receiver with TurningPoint AnyWhere 2.1 or greater. For non-installed versions of the application the ftdi.exe file can be found in the TurningPoint AnyWhere 2008 folder under Misc.

2.3.0.210

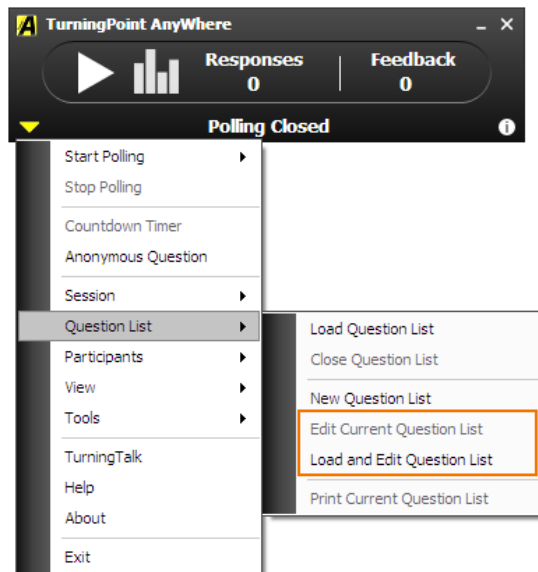
Known Issues:

- If the *Invalid Response Notification* setting is set to True, and you are polling a multiple response question with a ResponseCard XR, the responses must be sent individually.

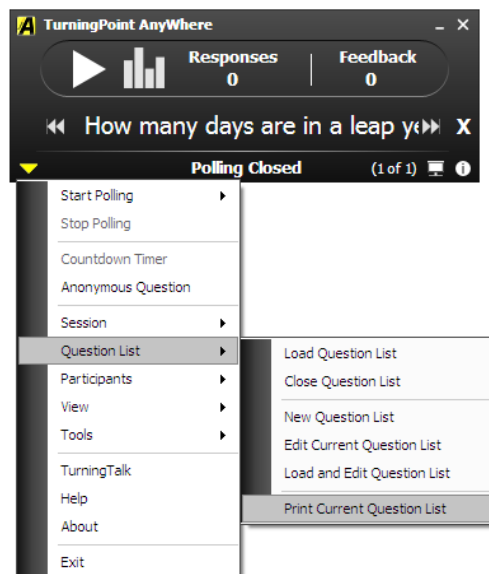
Enhancements:

- Multiple Response Questions
- Assign multiple correct answers for quick poll questions
- Option to set a default number of answer options for quick poll

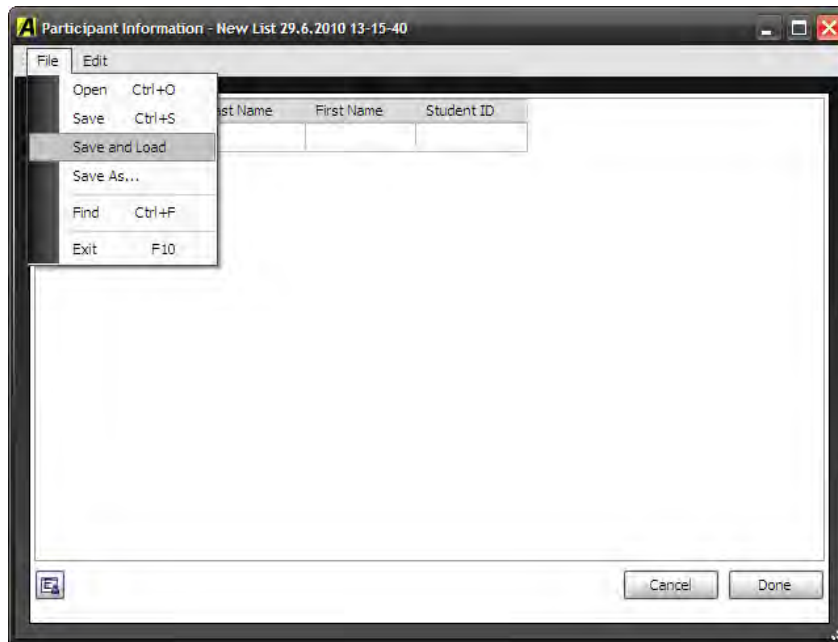
- Question Lists can now be edited and loaded



- Print currently loaded Question Lists



- Participant Lists can be saved and loaded

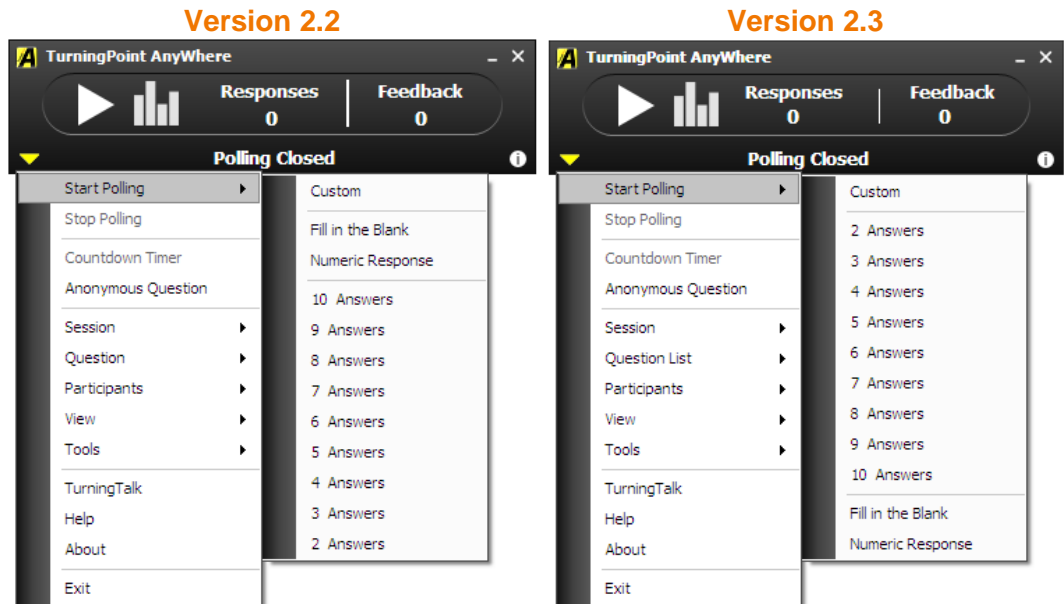


- Question Lists can be closed directly from the TurningPoint AnyWhere Showbar

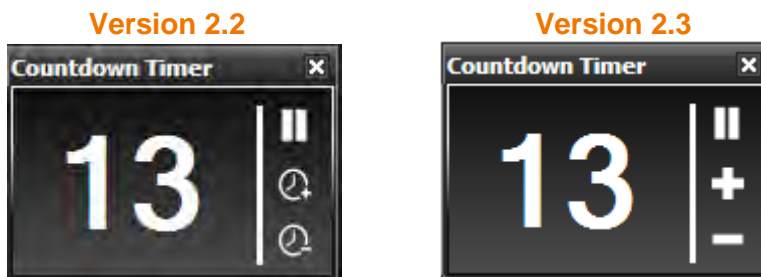


User Interface Changes:

- The Start Polling sub-menu has been re-ordered



- Countdown Timer icons for increasing and decreasing time have been replaced with + and - signs




- The Response/Nonresponse Grids now appear with a solid white background
- In the Standards window, the "Built-in Standards" tab is now labeled "K-12 Standards"
- In the Report Window, the "Load Session" button is now labeled "Import Session"
- In the main menu, the "Question" option is now labeled "Question List"

2.2.0.85

Fixes:

- If a QuestionPoint file contained questions with tables the Turning Parser would not generate the questions
- The "Save Information Checkbox" did not save the password on the ResponseWare Login Window

- Continuing a prior session and assigning a participant list was not updating the participant information
- If a Question List was loaded and the  button on the showbar was selected to hid the response/feedback count and the application was then closed, upon restart of the application the Question List would not be loaded but the area where the Question List would have been displayed was still appearing
- Importing a QTI.zip file in the question editor was unsuccessful

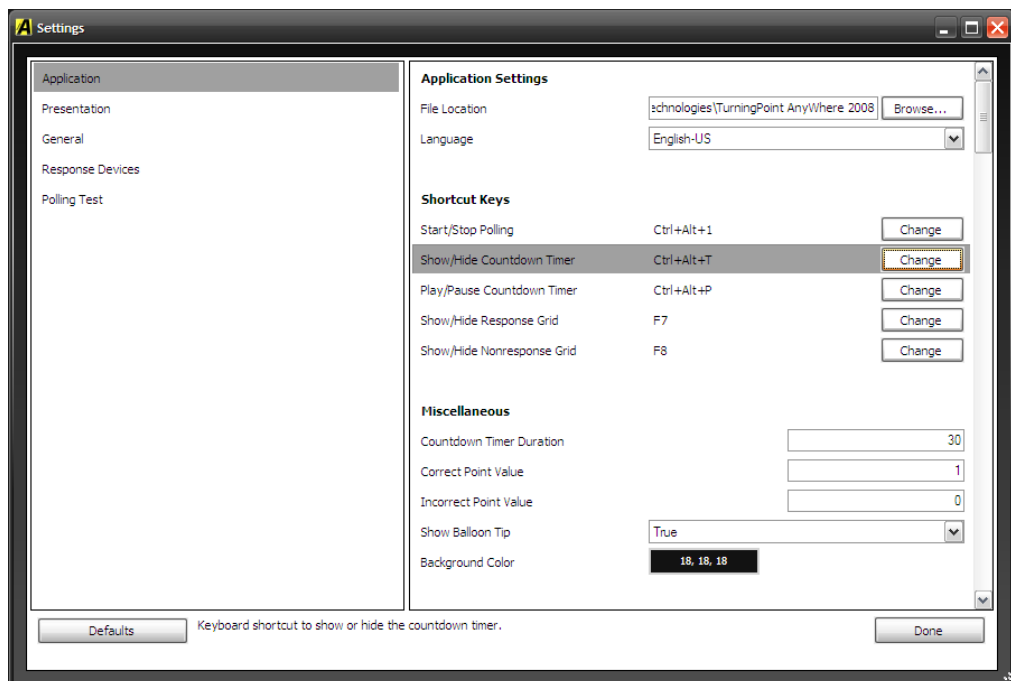
Enhancements:

- Countdown Timer

With Polling Open:  > **Countdown Timer**

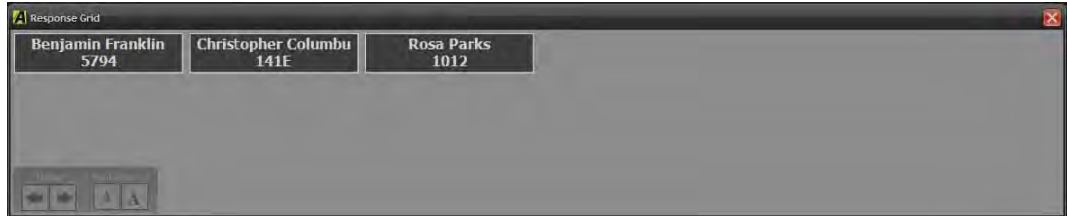


Or Specify a shortcut keystroke in the Application Settings



- Response/Nonresponse Grid

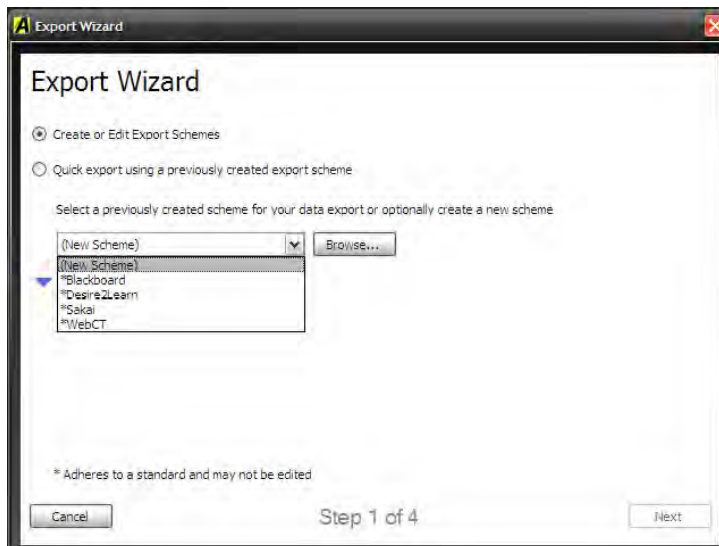
▼ > **View > Response Grid OR Nonresponse Grid**



Or Specify a shortcut keystroke in the Application Settings

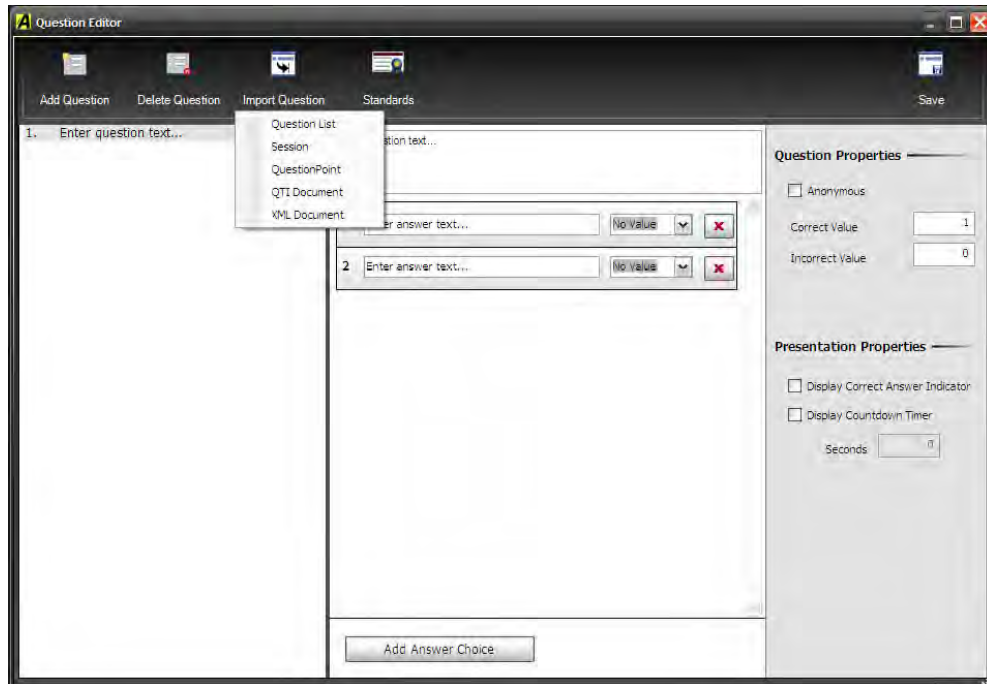
- Data Export Wizard

▼ > **Tools > Export Wizard**



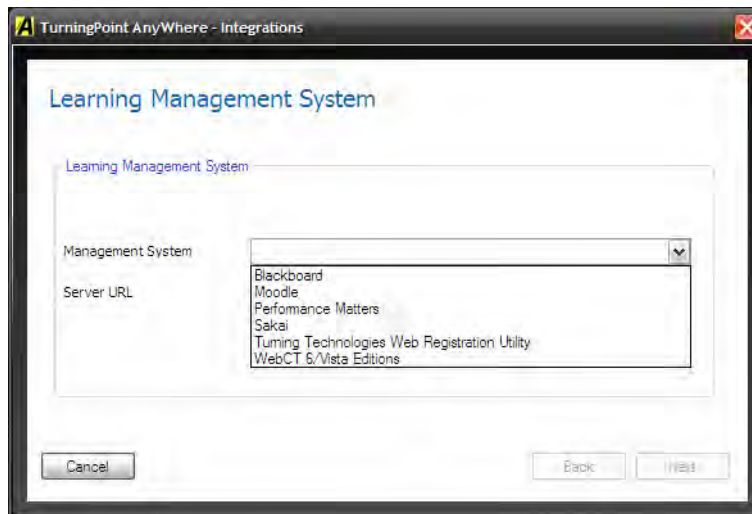
- QuestionPoint, XML and QTI parser support

▼ > **Question** > **New Question List**
Question Editor > **Import Question**



- Moodle and Performance Matters integration support

▼ > **Tools** > **Integrations**



2.1.0.9296**Fixes:**

- Updated user guide contains instructions for customers using a ResponseCard Receiver with a part number on the back label of "RRRF-01" or "RRLR-01."

2.1.0.9287**Fixes:**

- Attempting to connect to a ResponseWare session after the session had been created and polling was already opened would not allow you to connect
- Device IDs were not imported for a WebCT Participant List
- Importing a Participant List from an LMS and changing a Device ID would not allow you to export the grades back to the LMS
- Checking the option to poll a question anonymously would cause an error when polling was closed
- If Enforce Participant List was set to True, ResponseWare users were unable to join the session

Enhancements:

- TurningPoint AnyWhere no longer requires installation
- Added direct link to the TurningTalk user community
- Added Sakai integration into LMS
- Anonymous polling– Start polling anonymously any time under the Main menu>Anonymous Question
- Real-time registration tool – Allows students to register their devices to TurningPoint AnyWhere in real-time during class
- Save an exportable file in the format of CSV for easy upload to an LMS.
- Participant list display – shows the current participant list loaded similar to the real-time registration tool
- Numeric Response Only Question – Similar to FIB question but will only accept numeric responses and will be graded upon the range set up (e.g. anything between 1 and 10 is correct)
- Default Correct Point Value from 100 to 1

2.0.0.9212**Fixes:**

- Continuing a TurningPoint 2006 session and then opening the Session Viewer caused an error
- Editing question text in a new Question List would sometimes cause a loop of errors
- Trying to remove a participant from the Participants section of the Session Viewer after attempting to clear or correct a duplicate Device ID caused an error

Enhancements:

- Added language support for: Dutch, French, German, Spanish, Portuguese, Japanese, Korean, Russian

2.0.0.9153**Fixes:**

- When exporting a session to Blackboard the Blackboard ID field was blank
- Using a Participant List from TurningPoint would award attendance points for non-responders when exported to Blackboard
- Blackboard Wizard did not support a Single Sign On (SSO) connection

Enhancements:

- Dynamic charting
- Reports are now generated in HTML - no need for Microsoft Office
- Added a screenshot report that shows results, questions and a screenshot
- Added the ability to create question lists and assign correct answers with correct answer indicators
- The application menu can now be accessed directly from the showbar
- Added more user preferences
- Now supports Windows 64-bit OS

1.0.0.7323**Product Release**