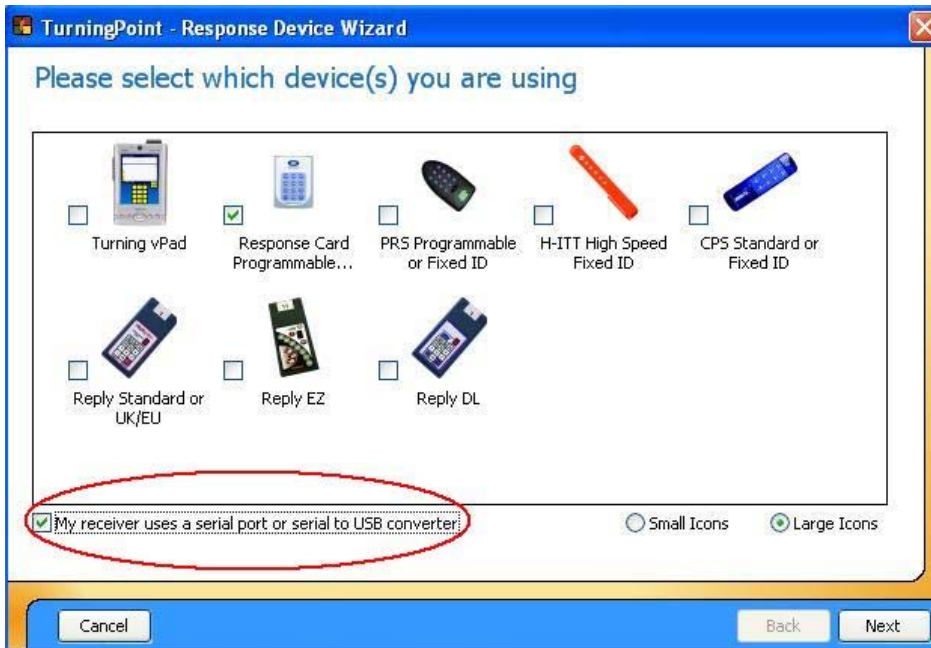


## Turning Point 2006 Response Device Wizard

1. To begin the hardware wizard click on the Lightning Bolt located on the Turning Point toolbar.



2. Select the type of input device that you will be using. If the device uses a serial port or a serial to USB converter, check the box labeled "My receiver uses a serial port or serial to USB converter." Click Next button



3a. If you checked the box labeled "My receiver uses a serial port or serial to USB converter" in step #2, you will be prompted to check the COM ports that will be searched. If you know which COM port the device is on uncheck all other COM ports. If you do not know on which COM port your device is located, select all COM ports. Click Next button.



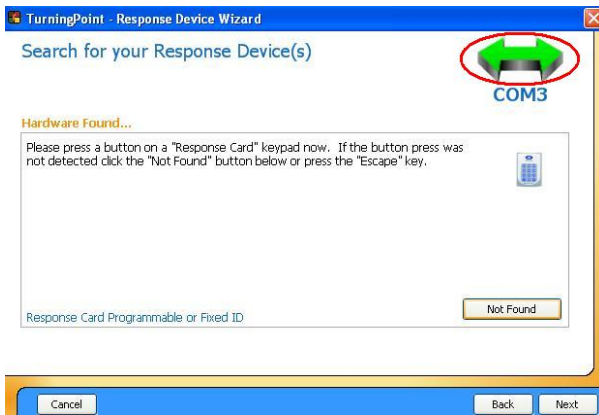
3b. (optional) If you selected Turning vPad in step #2, you now have the option to change the current vPad port. Click Next button.



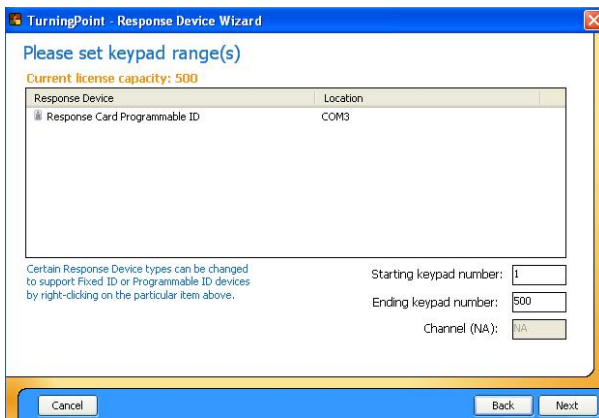
4. At the Search for your Response Device(s) screen click on the Search Again button. The hardware wizard will cycle through the COM ports that were selected in step #3.



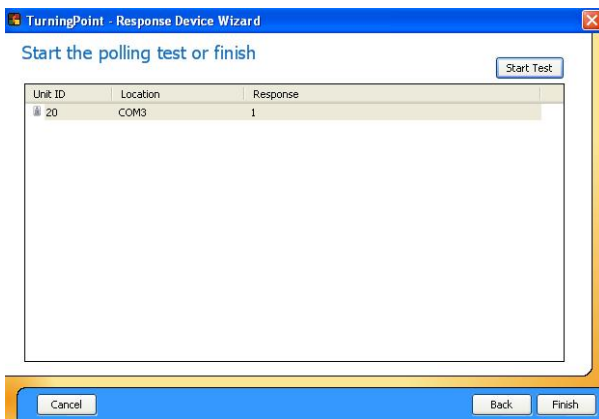
5. Follow the onscreen instructions until the red and green arrow turns a solid green. This indicates that your device has been found. Click Next button.



6. At the Set Keypad range(s) screen you have the option to set the starting and ending keypad numbers. If you are using a radio frequency keypad, you have the option to change the channel that the receiver will operate on. Click Next button.



7. At the Start polling or finish screen you may test your input devices by clicking on Start Test button. Press a button on your keypad or other input device. The unit ID, location and response will be displayed on the screen. Click on End Test button. Click on Finish button.



This completes the Turning Point 2006 Response Device Wizard.