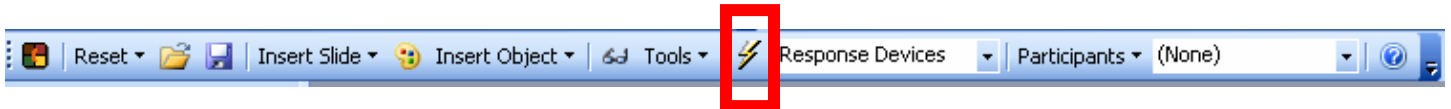


## TurningPoint 2006 Response Device Wizard Hardware Setup (Excludes vPad)

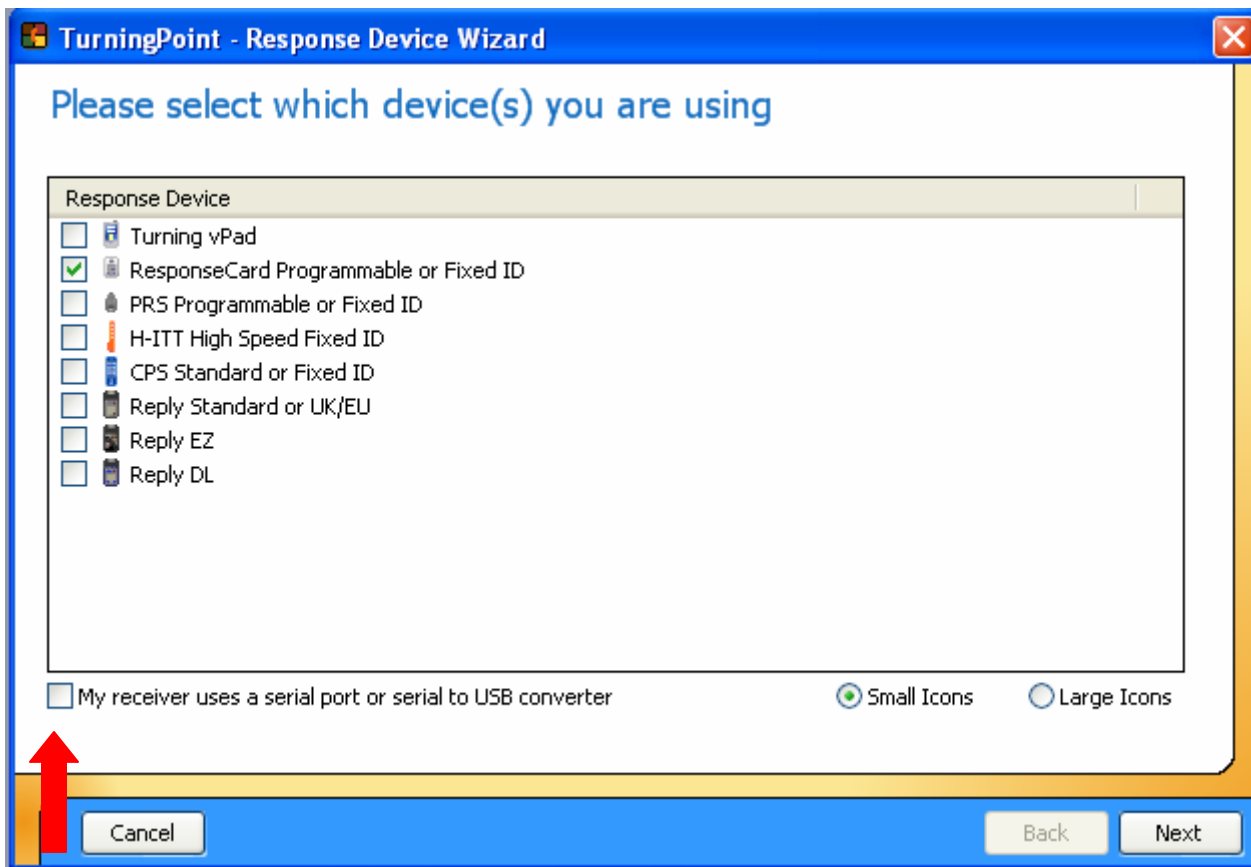
Before running the Response Device Wizard, plug your receiver(s) into the computer. TurningPoint 2006 allows you to use multiple types of hardware at the same time.

Open TurningPoint 2006 using the TurningPoint 2006 icon.

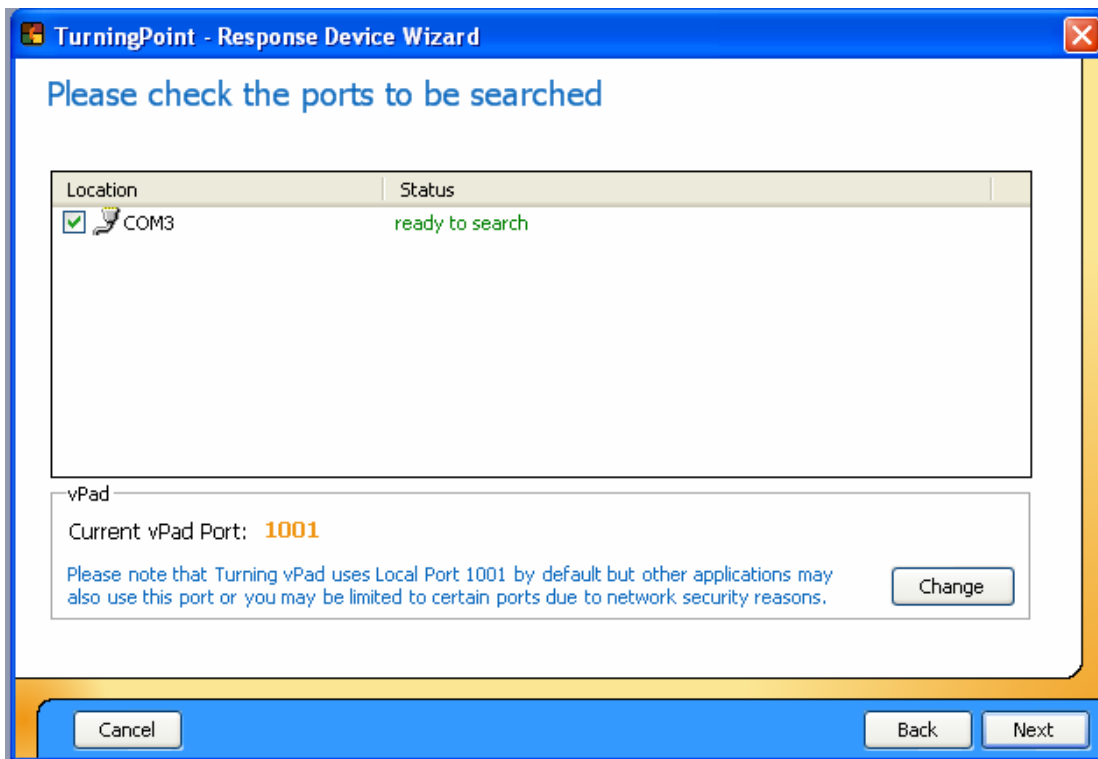
To start the Response Device Wizard, click on the lightning bolt on the TurningPoint toolbar.



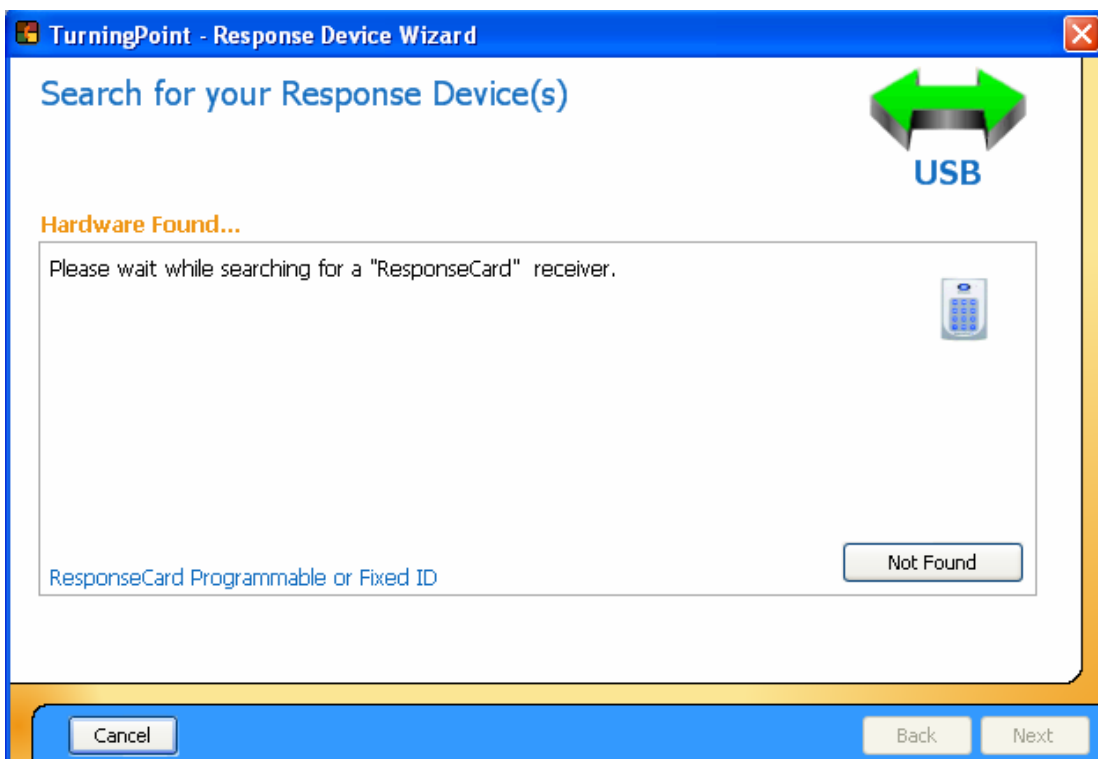
Select the type of response devices that will be used. If the receiver uses a serial port or a serial to USB converter, check the box next to *My receiver uses a serial port or serial to USB converter*. Click *Next*.



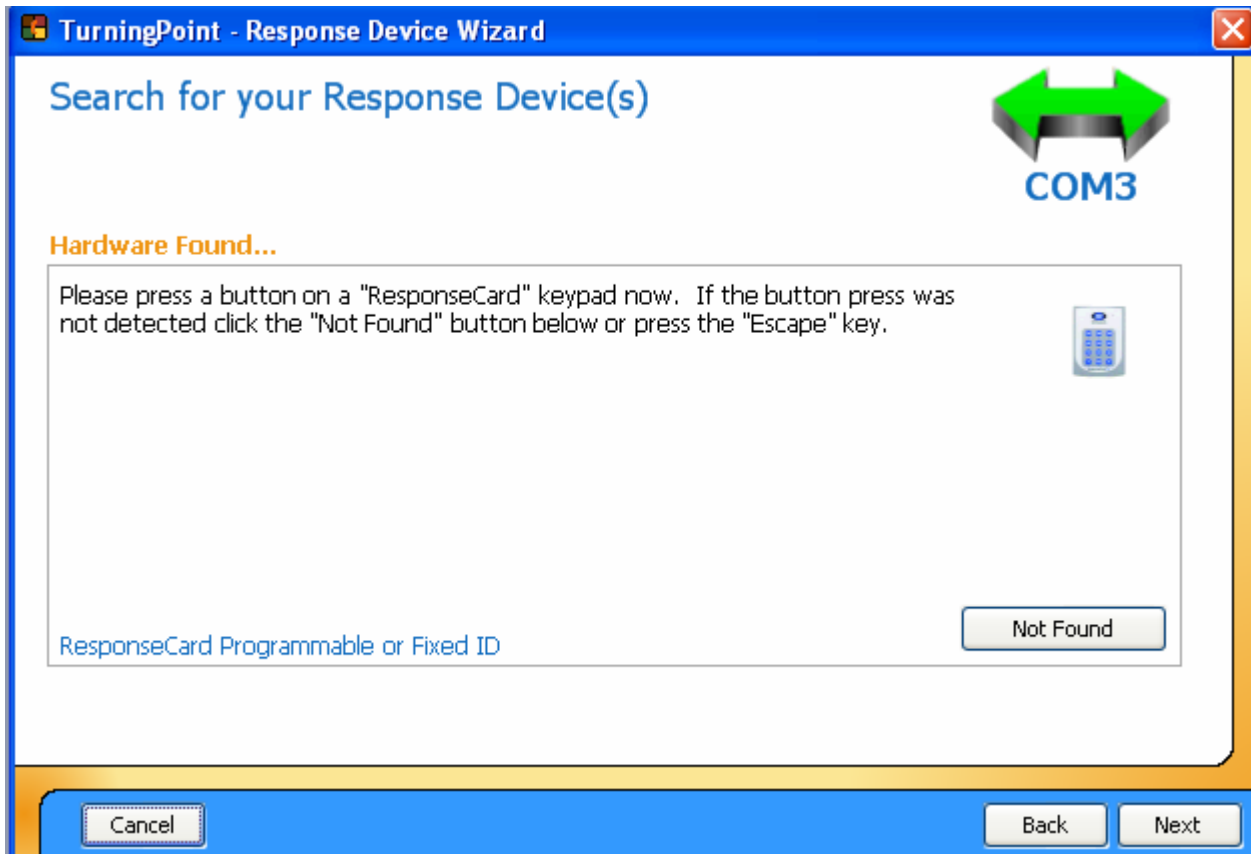
If the receiver(s) use a serial port or serial to USB converter, the next screen will list the COM ports found on the computer and their status. Check the box next to the COM ports the receiver(s) will be using. If you are not sure of the location of the receiver(s), select all COM ports and TurningPoint will look for the receiver(s) on each one. Click *Next*.



TurningPoint will automatically find the USB receiver(s). When the arrow turns green, the receiver was found successfully.



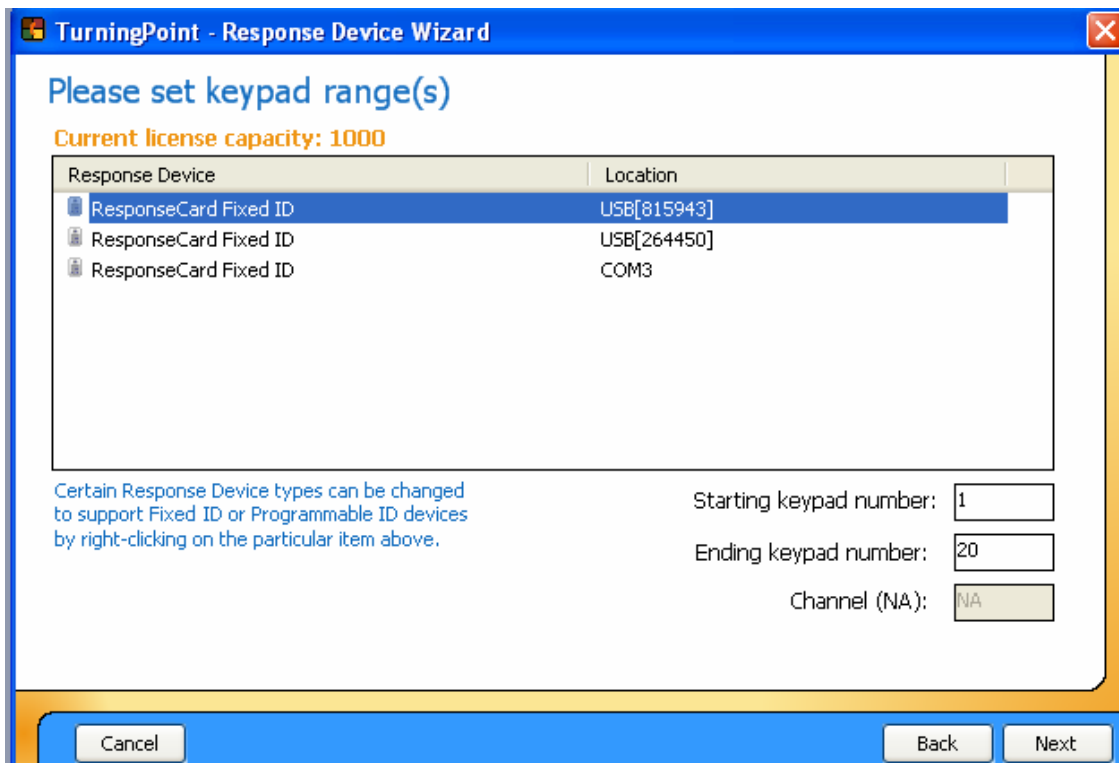
After searching for USB receivers, TurningPoint will search for receivers using a serial port or USB serial converter. For Infrared Hardware, press a button on the appropriate keypad while aiming it towards the receiver. The arrow above the COM port location will turn green when the receiver is found.

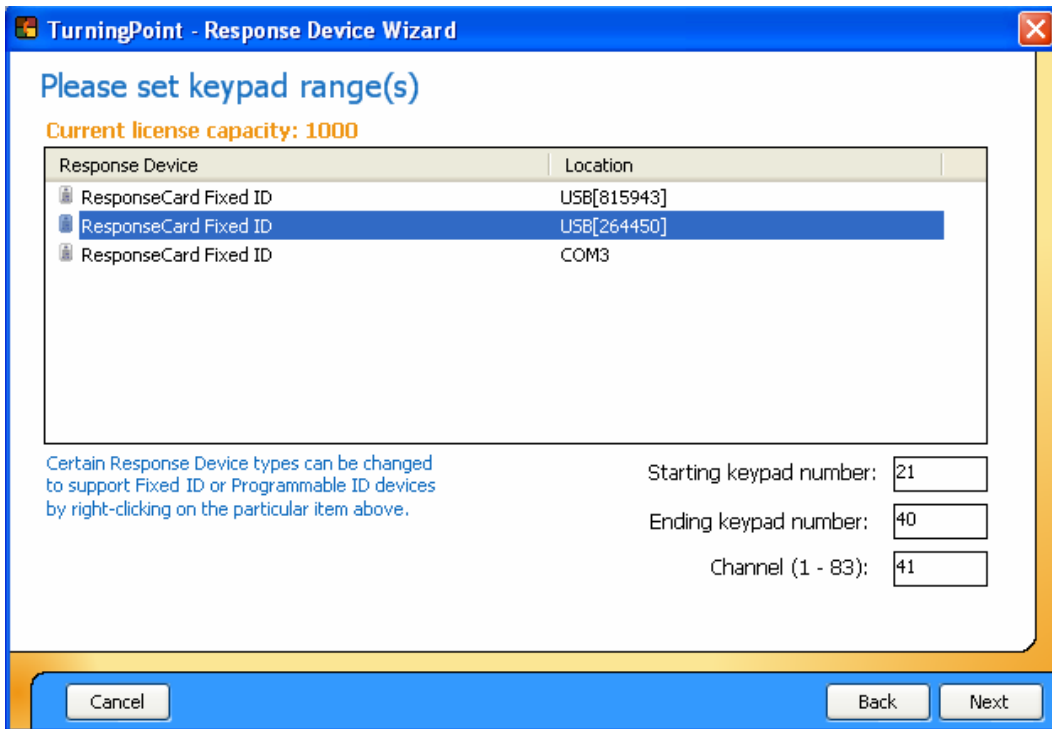


The following screen shows that TurningPoint is done searching for the receivers. If you are confident that all of your receivers were found, click *Next*. If you would like to search for the receivers again, click *Search Again*.



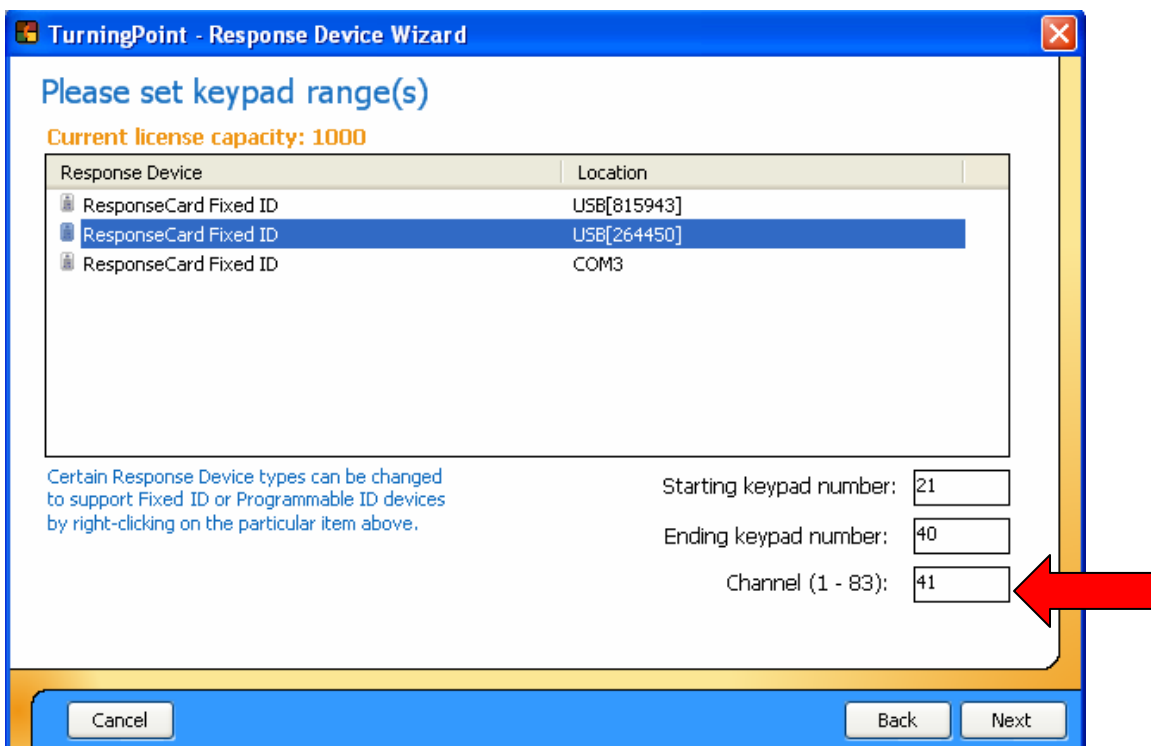
Setup the keypad ranges for each receiver found by clicking on the receiver and entering the starting keypad number and ending keypad number in the appropriate boxes.



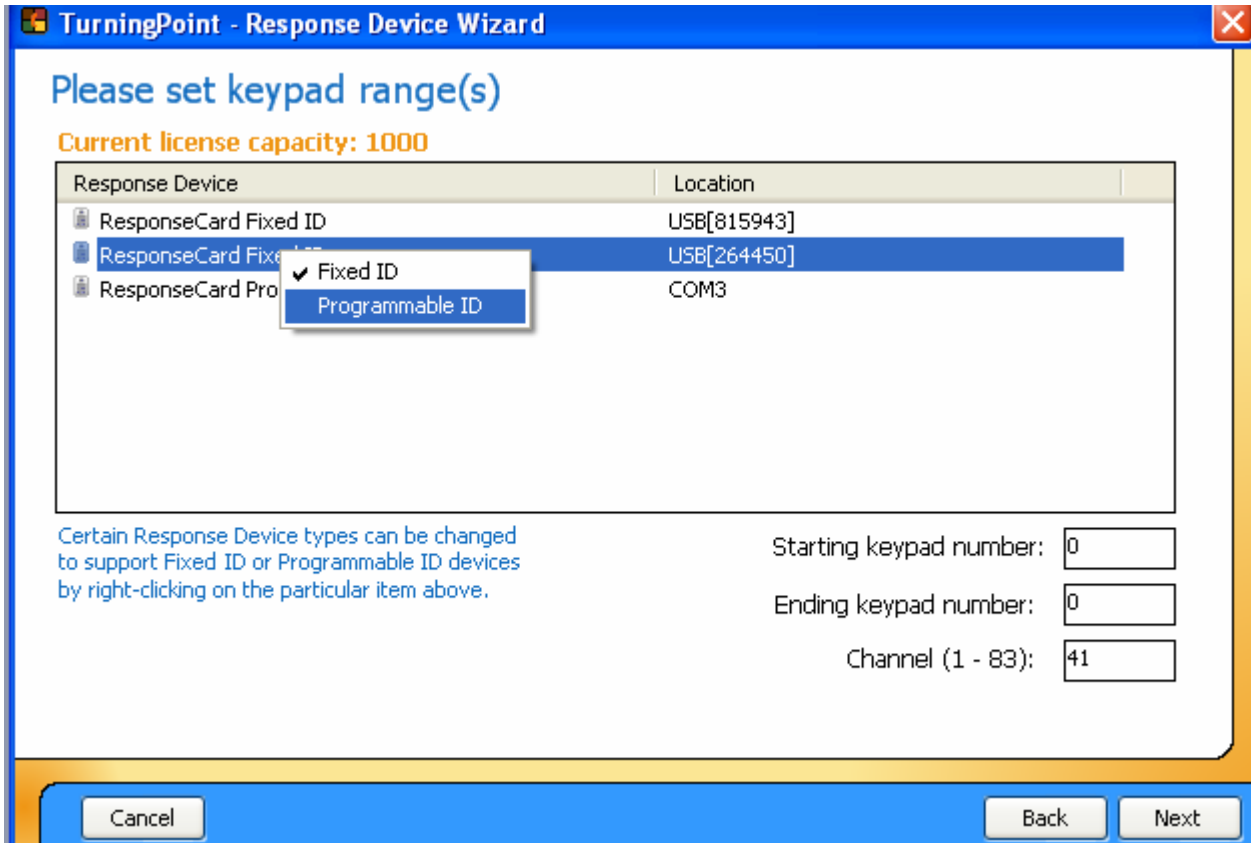


If using a Radio Frequency Response Card receiver, you can change the channel by entering a channel number from 1 to 83.

► *The channel on the Radio Frequency Response Card receiver must match the channel on the Radio Frequency Response Card keypads. To change the channel on the Response Card keypads, hit GO on the keypad and enter in the channel number.*

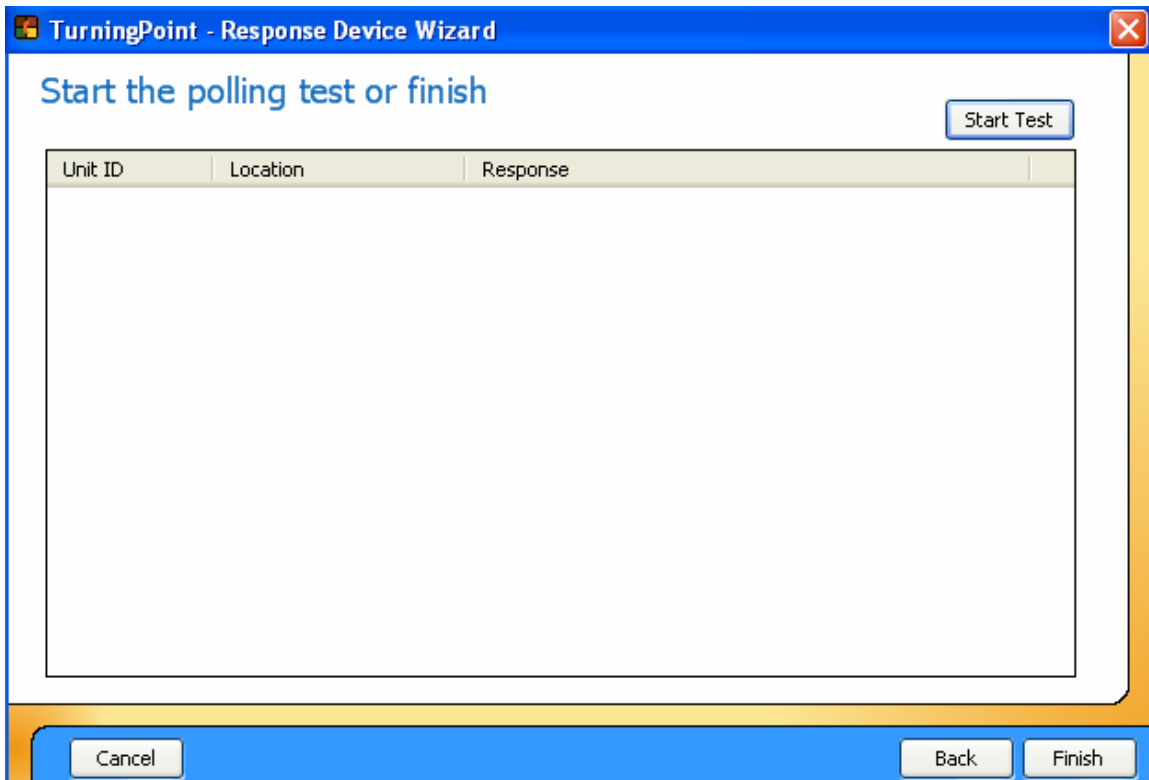


If you are using a USB Infrared Response Card receiver with Programmable keypads, you will need to set the receiver to Programmable ID by right clicking on the receiver and selecting Programmable ID.



After setting the keypad ranges and channels, click *Next*.

Run a polling test to be sure the responses from the keypads are being recognized. Click *Start Test* and hit any of the number buttons on all types of keypads being used. If you are using Infrared keypads, make sure you have a line of sight to the receiver.



When finished with the polling test, click *End Test*. Then click *Finish*.

