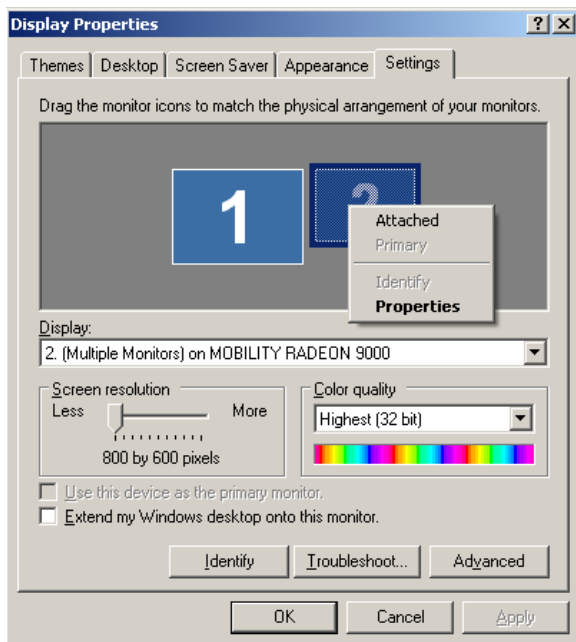


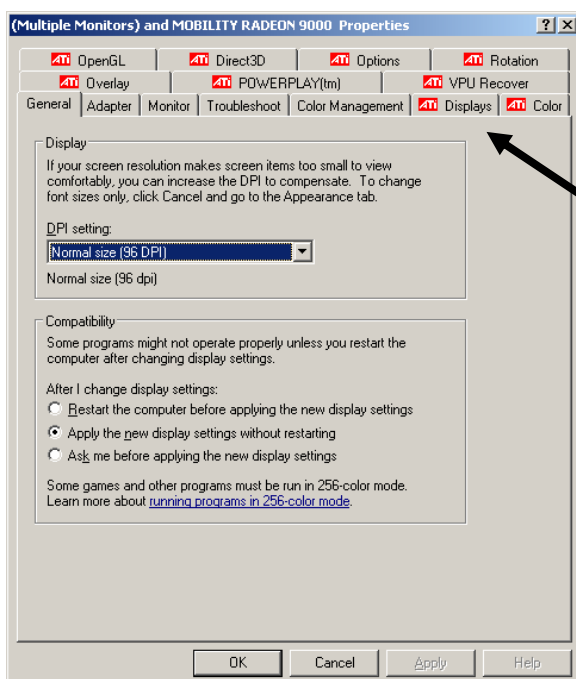
## Running Presentations with a Projector

### A) SETTING UP SINGLE AND DUAL MONITOR SCHEMES

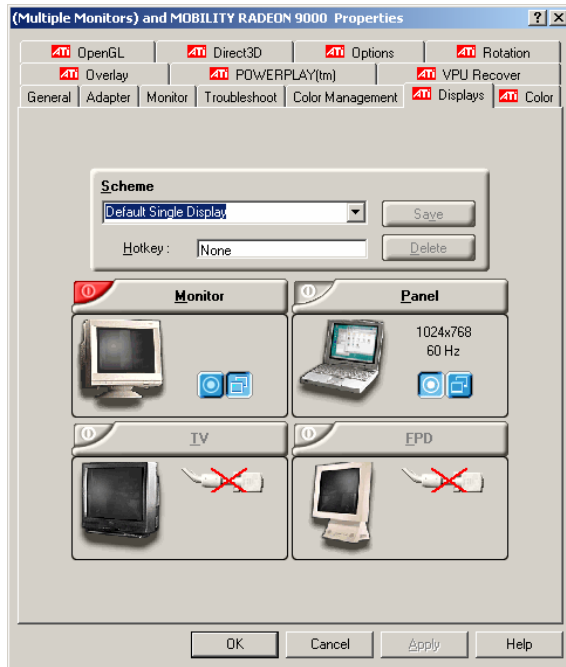
In order to run presentations with projectors reliably, you must set up display **Schemes** in the ATI software, one for a single monitor setup and one for a dual monitor (projector) setup. This is a one-time setup.




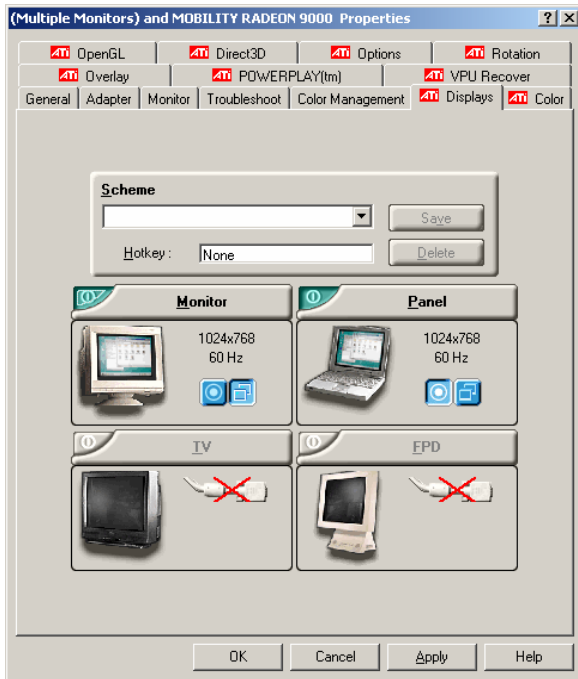
- 1) Right-click on your **Desktop** and click **Properties**. (Alternately, you may go to the **Control Panel** and click **Display**)
- 2) Go to **Settings** Tab.
- 3) Verify the **Screen Resolution** is set to 1024 x 768 on both monitors. (This step has not been verified on all projectors yet, so I am including it just to be safe)
- 4) Verify the second monitor is disabled by right-clicking on **Monitor 2** and verifying there is no checkmark next to **Attached**. (See image below)
- 5) Click on **Monitor 1** then click the **Advanced** button.





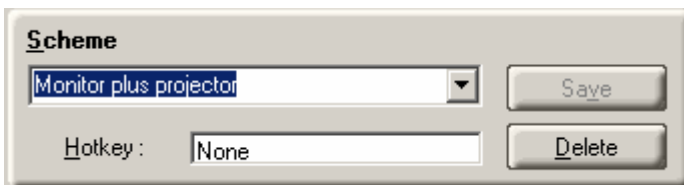
- 6) You should see a screen that looks like this
- 7) Click on the **Displays** tab



- 8) Your scheme may be set to **Default Single Display**. If it is not, click the drop-down list and select it.
- 9) Once selected, your screen should look somewhat like the above screen. The main point should be that **Monitor** has the red button next to it 
- 10) Click in the **Hotkey** area and hold down **CTRL+ALT+F7**
- 11) Click **Save**. When it asks to overwrite, click **Yes**.
- 12) Next, click that red button. Both the **Monitor** and **Panel** buttons should change color to a bluish-green. (See below)



- 13) Verify that **Panel** has the circular button pressed: 
- 14) Verify **Monitor** has the windowed button pressed: 
- 15) Up where it says **Scheme**, type in **Monitor plus projector**

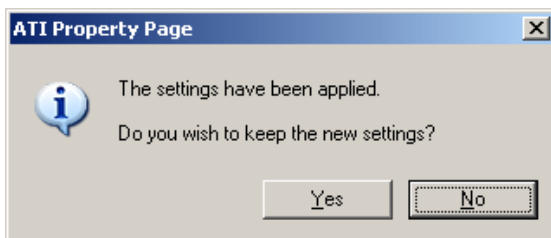


- 16) Click in **Hotkey** and hold down **CTRL+ALT+F8**
- 17) Click **Save**
- 18) Click the drop down and select **Default Single Display** again, then click **OK**

## B) SWITCHING BETWEEN SCHEMES

Before going into presentations, you will need to load the proper scheme. When running in a normal environment (i.e. no projector), use the **Default Single Display** scheme. When you connect the projector, use the **Monitor plus projector** scheme. To switch between the two:

- 1) Boot up your computer and connect the projector
- 2) **DO NOT** use the **Fn+F8** key combination to switch between displays
- 3) Press **CTRL+ALT+F8**
- 4) You will see this dialog box:



- 5) Click **Yes**

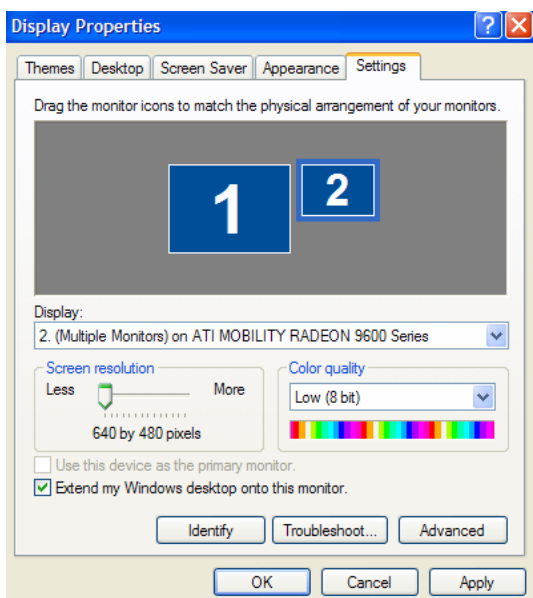
You will now have the video going to both your laptop's monitor and the projector. Once you have completed the presentation, set the displays back by doing the following:

- 1) Press **CTRL+ALT+F7**
- 2) You will see the above dialog box again. Click **Yes**

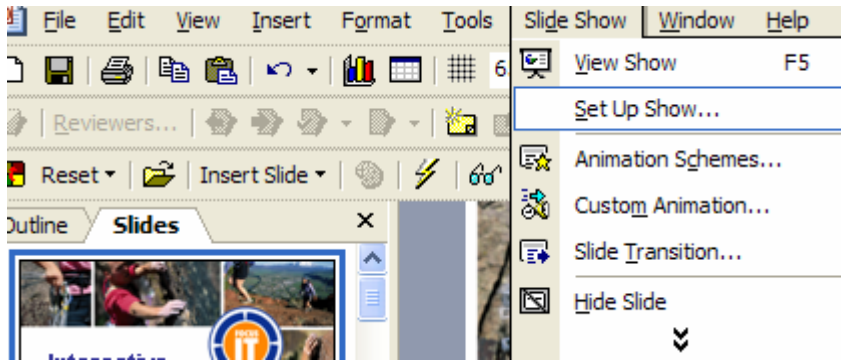
The image will then disappear from the projector and the screen will be reset back to normal.

## C) RUNNING A PRESENTATION AS AN EXTENSION OF THE DESKTOP

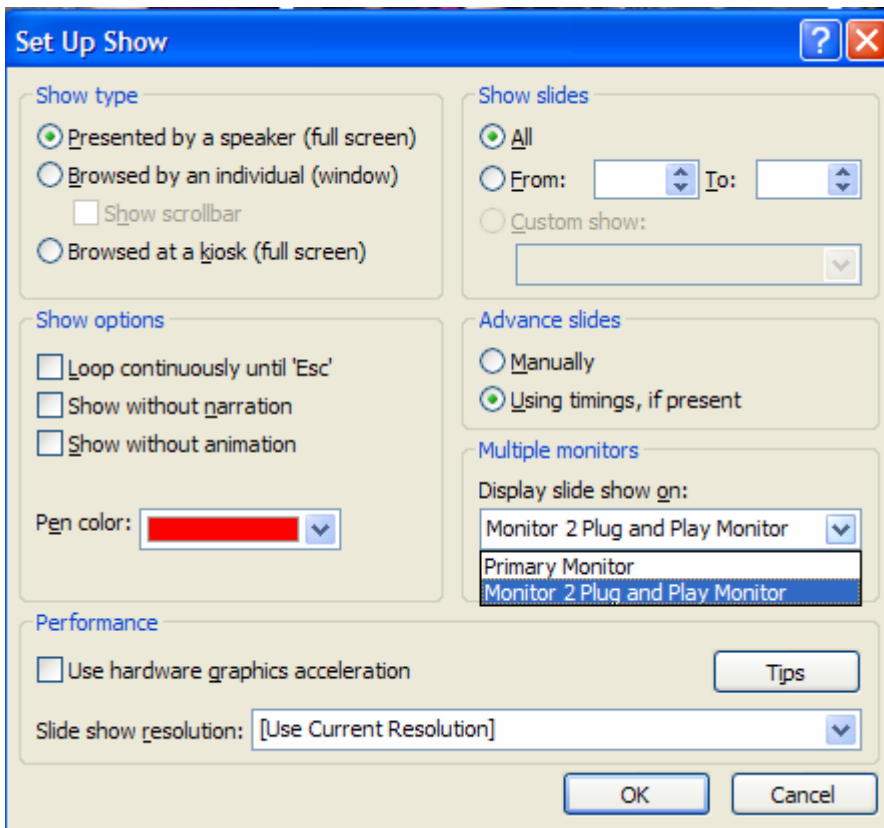
This method is very reliable; however it is more difficult to run a presentation this way.



- 1) Right click on the **Desktop** and go to **Properties**
- 2) Click on the **Settings Tab**
- 3) Click on the box that contains the 2
- 4) Check the box next to **Extend my Windows desktop onto this monitor**
- 5) Click **Apply**
- 6) Click **OK** and close the **Display Properties Screen**



- 7) Open your presentation
- 8) On the PowerPoint® toolbar go to **Slide Show**
- 9) Click on **Set Up Show**

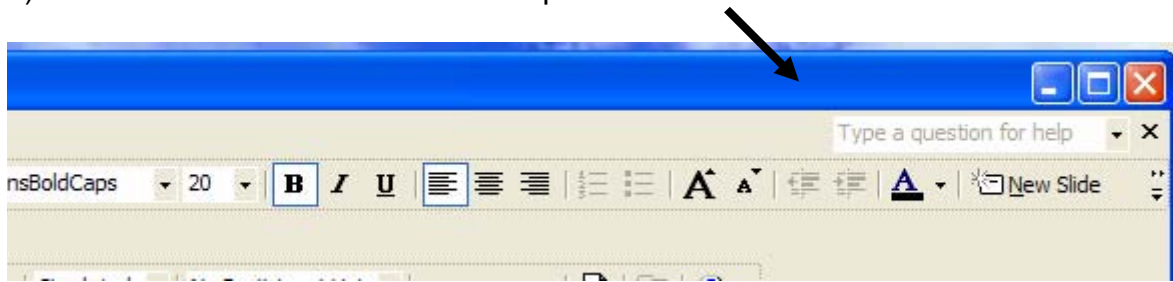


- 10) Look for Multiple Monitors
- 11) Click the drop down arrow and **Select Monitor 2 Plug and Play Monitor** or the **Secondary Monitor**
- 12) Click **OK**
- 13) Now you are ready to run the presentation as an extension of the desktop

#### D) DRAGGING A PRESENTATION OVER TO THE EXTENDED DESKTOP

- 1) Right click on the **Desktop** and go to **Properties**
- 2) Click on the **Settings Tab**
- 3) Click on the box that contains the 2
- 4) Check the box next to **Extend my Windows desktop onto this monitor**
- 5) Click **Apply**
- 6) Click **OK** and close the **Display Properties Screen**
- 7) Open the presentation

8) Double-click on the Title Bar of the presentation.



- 9) Drag the presentation off of the computer's desktop onto the projection screen.
- 10) Go to **Slide Show** on the PowerPoint® Toolbar
- 11) Select **View Show**