



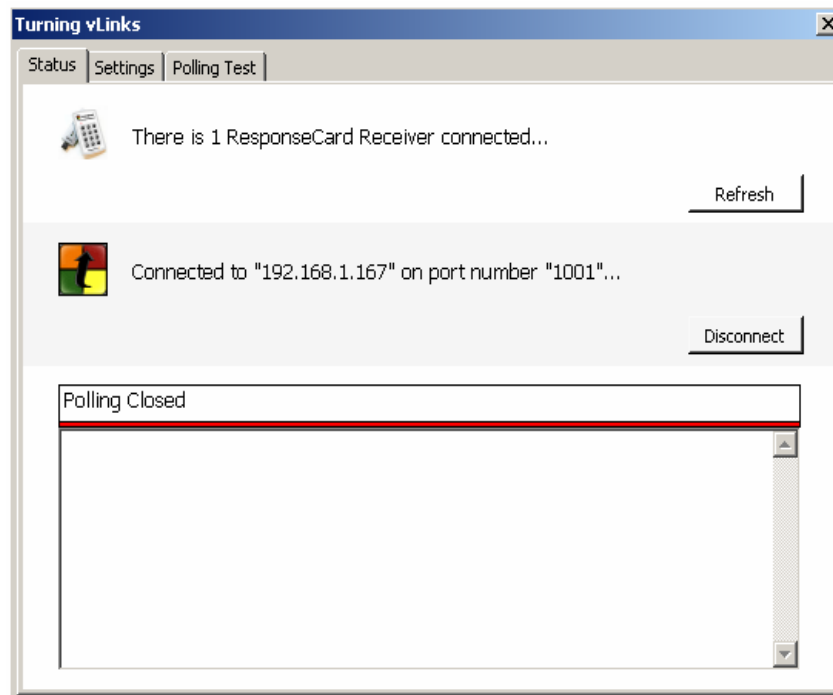
User Guide

September 2007

Turning vLinks 2007 – version 1.0.0.0

Turning vLinks allows a user to collect data for polling from remote locations. vLinks connects to the host computer over the internet, transmitting audience responses to that computer. This allows users to collect response data in TurningPoint from any computer with an Internet connection.

- Compatible with Windows XP and Vista.
- Allows the user to collect polling responses from remote locations via the Internet.
- Only needs to be installed on the remote computer.



To Install vLinks

1. **Plug in your TurningPoint IR or RF receiver.** Windows will automatically detect the receiver and install the appropriate drivers. The two different types of receivers for TurningPoint are shown below.



RF Receiver



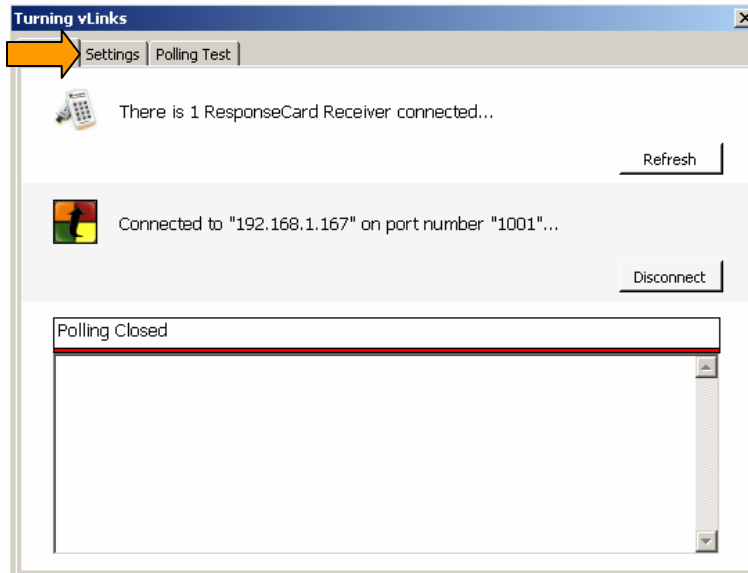
IR Receiver

2. Double click on the **vLinks** executable, and vLinks will load.

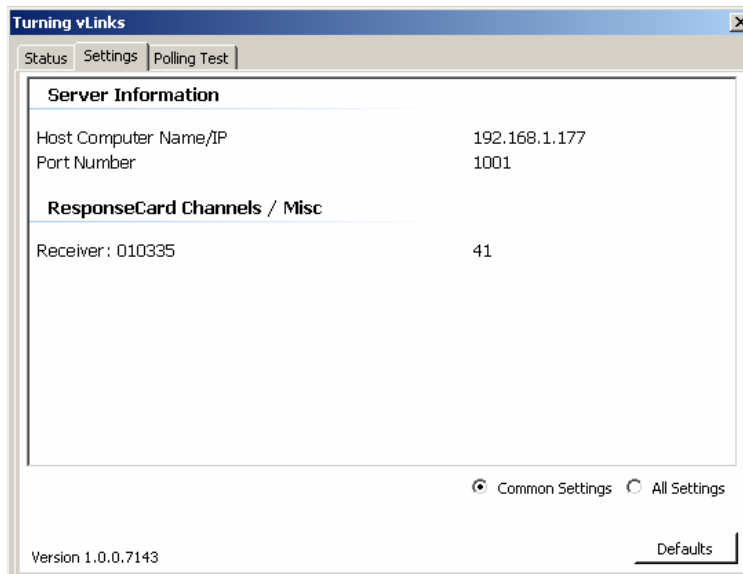


Setting Up Your Receiver

1. Click the **Settings** tab in the Turning vLinks window.



2. Verify that your receiver is displayed.
 - a. If you are using an RF receiver, verify it is set to the appropriate channel. The default channel is 41. To change a channel, double-click on the **Channel Number**, and enter a new channel number.

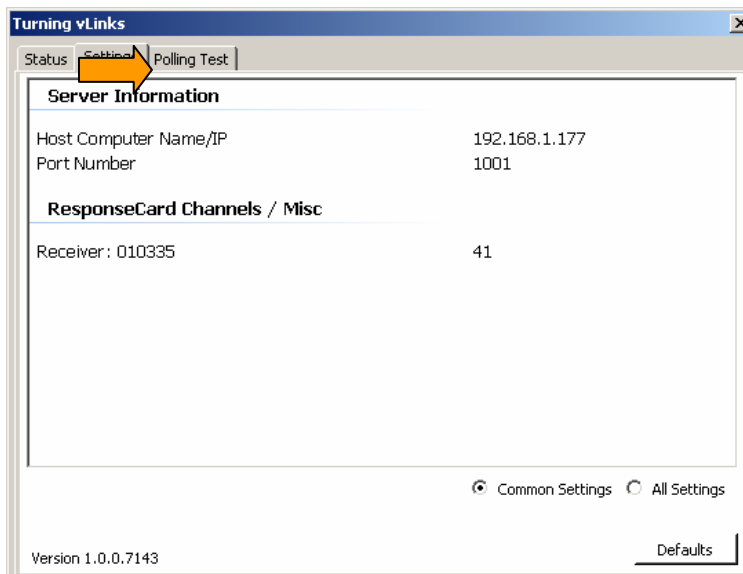


b. Programming your ResponseCard RF.

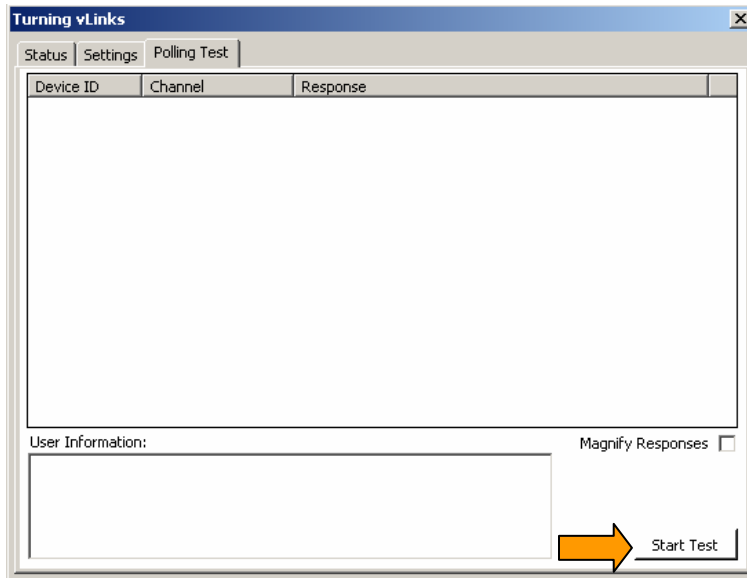
1. Press and release the **GO** button.
2. While the light is flashing red and green, Enter the **2 Digit Channel Code** (i.e. Channel 1 = 01, channel 21 = 21).
3. After the second digit is entered, press and release the **GO** button.
4. The light should flash green to confirm.



3. Click on the **Polling Test** tab in the Turning vLinks window.



4. Click **Start Test** to begin polling.

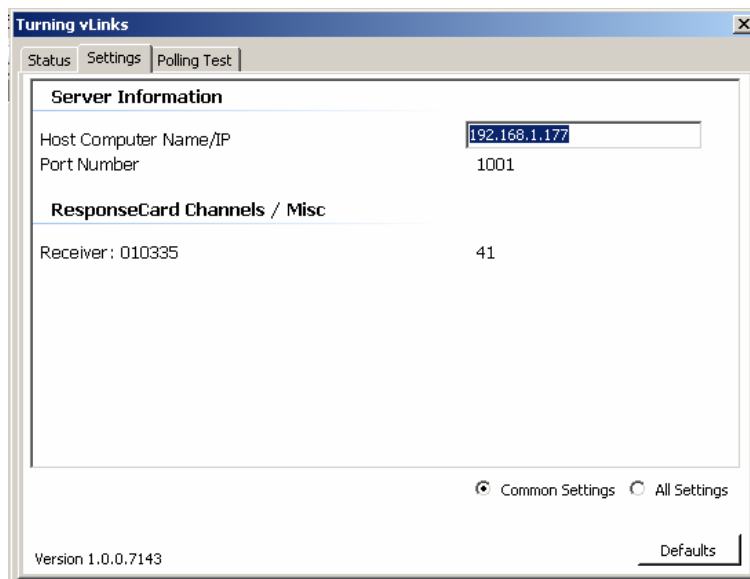


5. **Press any button on a ResponseCard** and the Device ID of the ResponseCard will display.

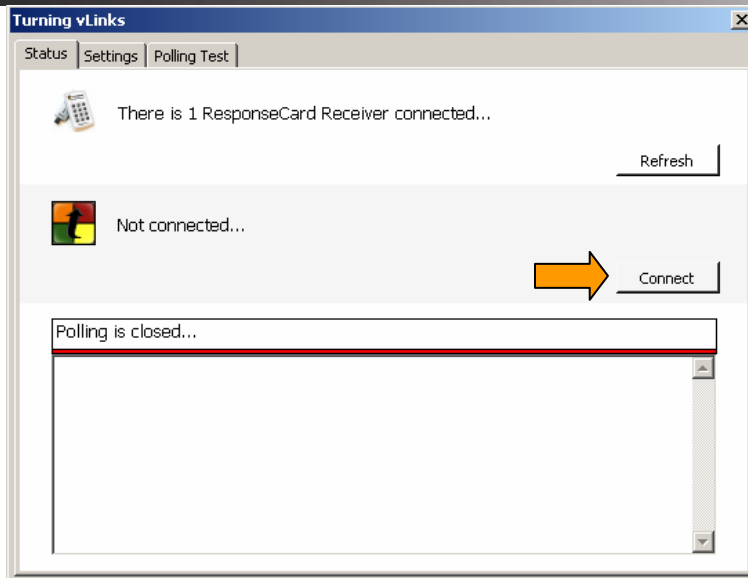
To Connect to a Host Computer

Make sure that the host computer is displaying a TurningPoint presentation with polling open.

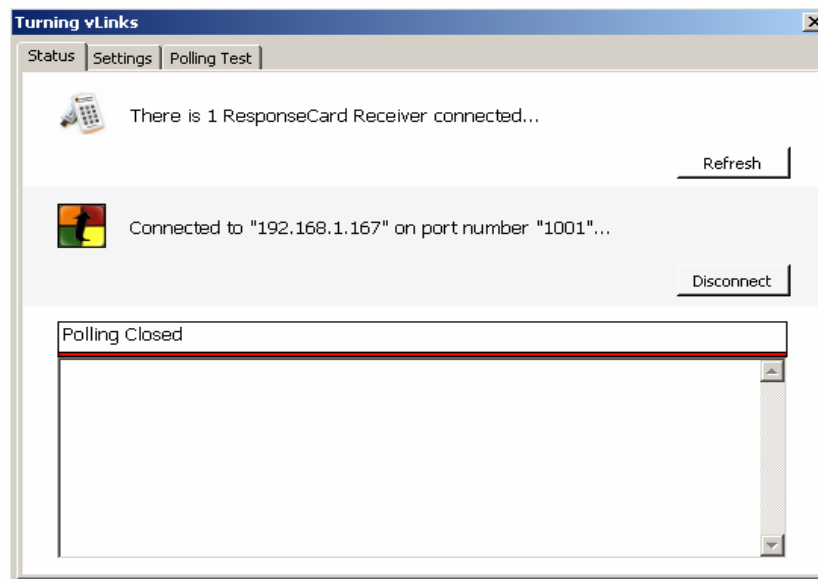
1. Click on the **Settings** tab in the Turning vLinks window.
2. Double-click in the field to the right of **Host Computer Name/IP** and enter the host computer's **Friendly Name** or **IP Address**.



3. Verify that the Port Number is also correct. Default Port Number is 1001.
4. Click on the **Status** tab in the Turing vLinks window.
5. Click the **Connect** button.



6. Turing vLinks will now connect to the host computer.



7. You can now send responses to the host computer using the ResponseCards.