

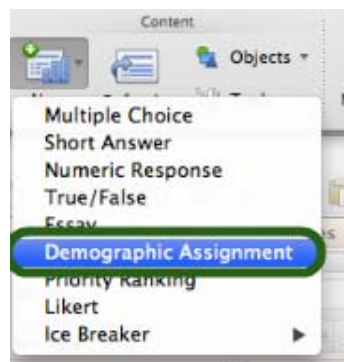
ANYWHERE POLLING ADDITIONAL TOPICS

Environment 1: Polling On-the-Fly or Over an Application

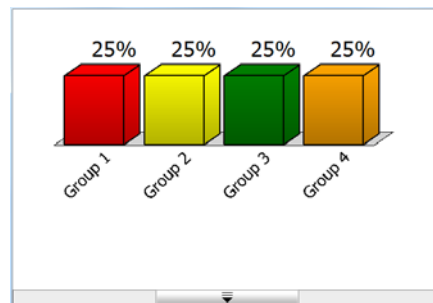
DEMOGRAPHIC ASSIGNMENT

A demographic assignment question assigns participants to demographic groups, i.e. male or female. Assigning participants to a demographic allows you to view how each demographic answered during the presentation.

- 1 Click the **Quick Poll Menu**.
- 2 Select **Demographic Assignment**.



- 3 After you have gathered responses, **close** polling.
The chart displays the percentage of the chosen groups.

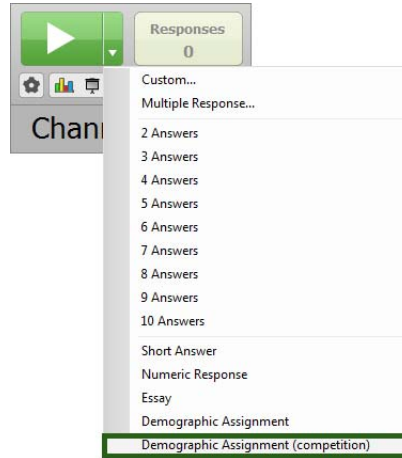


TEAM COMPETITIONS

Add competitions to polling to keep track of teams or participants with the most points and fastest responses. Several types of on-the-fly competitions are available.

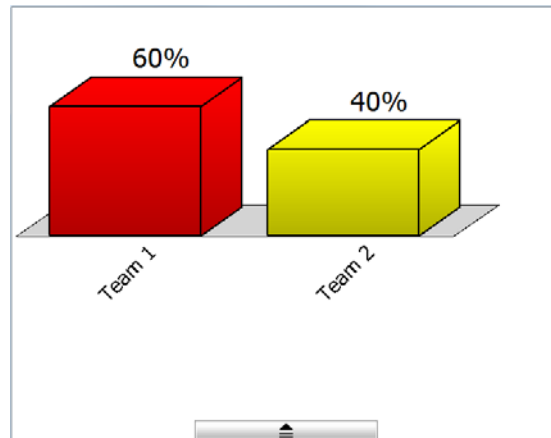
- 1 Click on the **Quick Poll Menu**.

2 Select Demographic Assignment (competition).



3 Participants “click in” to choose a team.

4 Close polling to display the **percentage chosen** for each team.



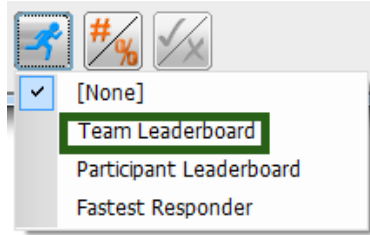
- Correct answers need to be assigned on competition questions for teams to accumulate points. To assign correct answers on-the-fly, right-click on the bar of the correct answer choice.

TEAM LEADERBOARD

A team leaderboard displays the total points earned by each team.

- 1 Close polling to display the chart window.
- 2 Expand the bottom of the window and click on the **Competition icon**.

3 Select **Team Leaderboard**.



The accumulated points will display for each team.

A screenshot of a window titled 'Team Leaderboard'. It contains a table with two columns. The first column shows numerical values, and the second column shows team names. The data is as follows:

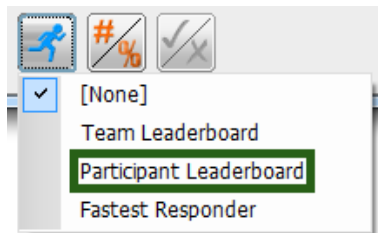
Points	Team
3.00	Team 1
1.50	Team 2

4 Click the **Competition icon** and select **None** to return to the chart.

PARTICIPANT LEADERBOARD

A participant leaderboard displays the total points earned by each participant.

- 1 Close polling to display the chart window.
- 2 Expand the bottom of the window and click on the **Competition icon**.
- 3 Select **Participant Leaderboard**.



The accumulated points will display for each participant. If a participant list is used, the participants' names will be displayed. Otherwise, only Device IDs will appear.

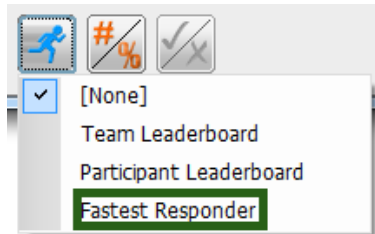
3	Participant 905E3B		
3	Participant 905E13		
2	Participant 905E3E		
1	Participant 905E1C		

- 4 Click the **Competition icon** and select **None** to return to the chart.

FASTEST RESPONDER

The fastest responder slide displays the participant(s) that responded the fastest and correctly to the question asked.

- 1 Close polling to display the chart window.
- 2 Expand the bottom of the window and click on the **Competition icon**.
- 3 Select **Fastest Responder**.



The times will display next to the participants' names or Device IDs.

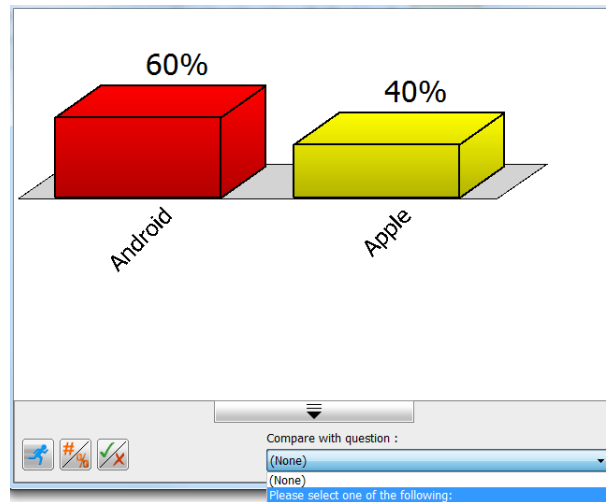
2.15	Participant 905E3B		
3.01	Participant 905E3E		
6.25	Participant 905E1C		

- 4 Click the **Competition icon** again and select **None** to return to the chart.

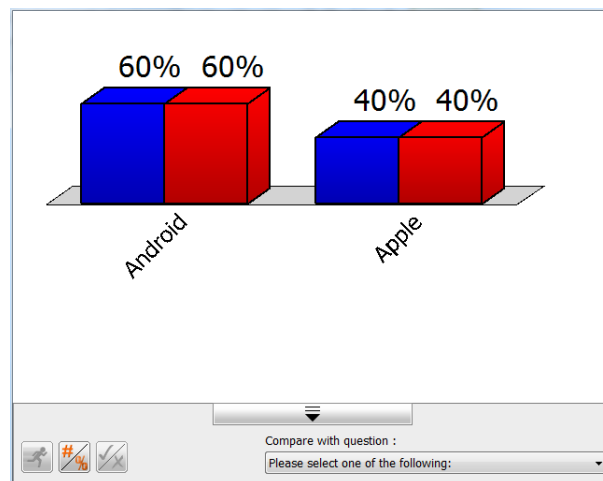
COMPARE WITH QUESTION

The compare with question drop-down menu allows you to compare the results of the current question with results from a previously answered multiple choice question.

- 1 **Open** and **close** polling on at least two questions.
- 2 From the **Compare with Question drop-down menu**, select a previous question to compare to the current question.



The chart will display how the participants responded to the first question compared to the current question.

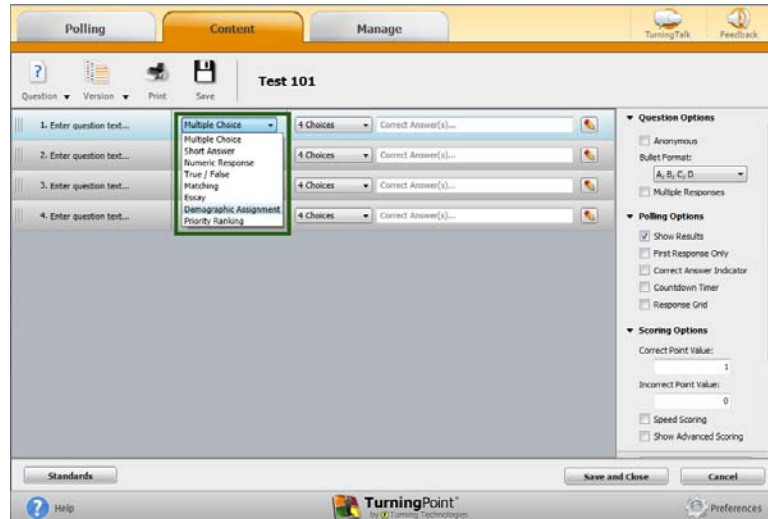


- 3 Select the drop-down menu again and select **None** to return to the current chart window.

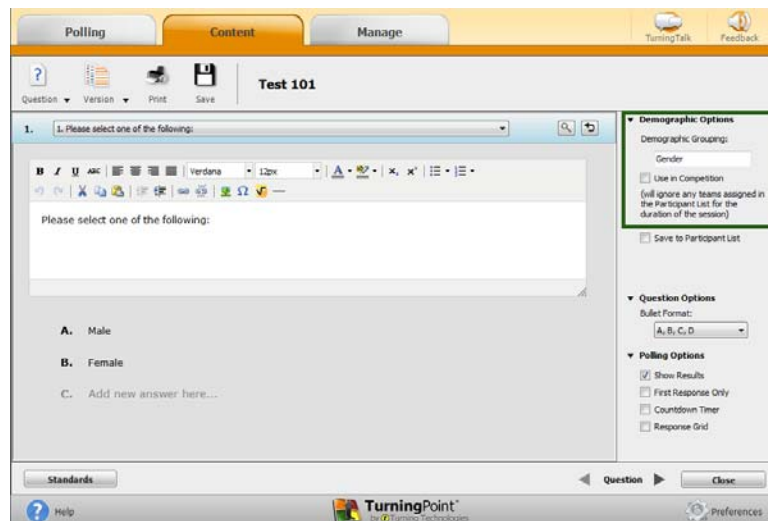
Environment 2: Polling with a Question List

QUESTION LIST: DEMOGRAPHIC ASSIGNMENT

- 1 From the question type drop-down menu, select **Demographic Assignment**.



- 2 Enter **question text** and **answer choices**.
- 3 Enter the **Demographic Grouping** under Demographic Options.

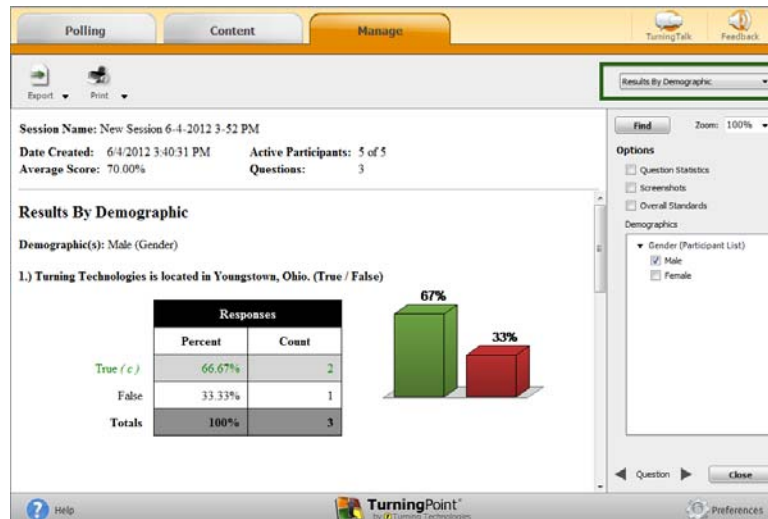


- 4 When finished, click **Close**.
- 5 Click **Save and Close**.

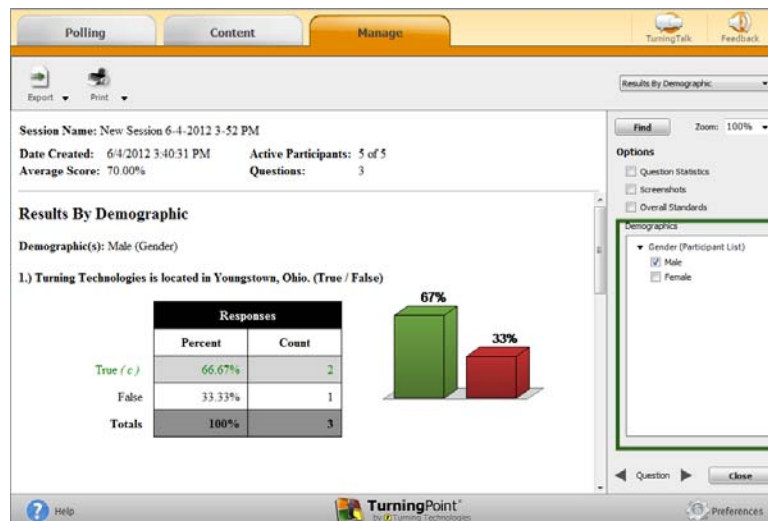
RESULTS BY DEMOGRAPHIC REPORT

Once the session is complete, you may generate a demographic report. This report can be generated whether you assigned demographics from the quick poll menu or within a question list.

- 1 From the **Manage** tab, select the appropriate session.
- 2 Click **Reports**.
- 3 Select **Results by Demographic** from the Reports drop-down menu.



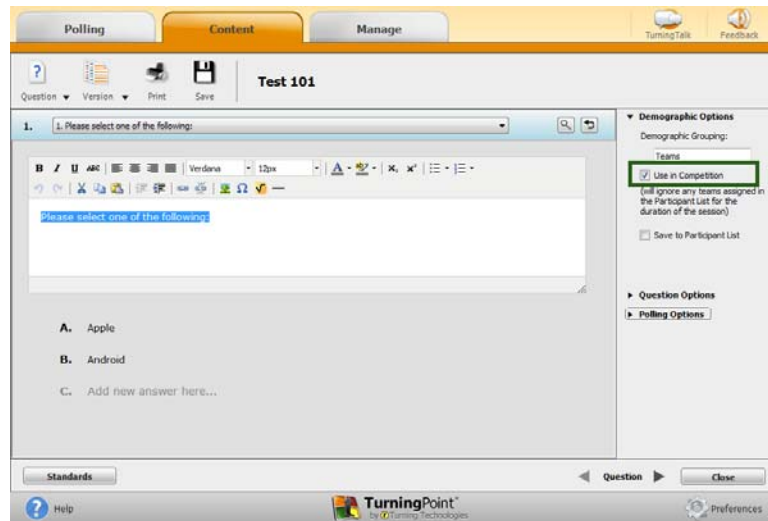
- 4 Select each group to filter results.



- 5 Optionally, choose to **export** to CSV, Excel or HTML, or **print** the report.
- 6 Click **Close**.

QUESTION LIST: TEAM COMPETITIONS

- 1 From the **Content** tab, click the **Content drop-down menu**, mouse over **New** and select **Question List**.
- 2 Name the question list and click **Save**.
- 3 Select **Demographic Assignment** from the Question Type drop-down menu.
- 4 Enter the **question text** and **answer choices**.
- 5 Select **Use in Competition** under **Demographic Options**.



- Verify that correct answers are set within the question lists so that teams can accumulate points.

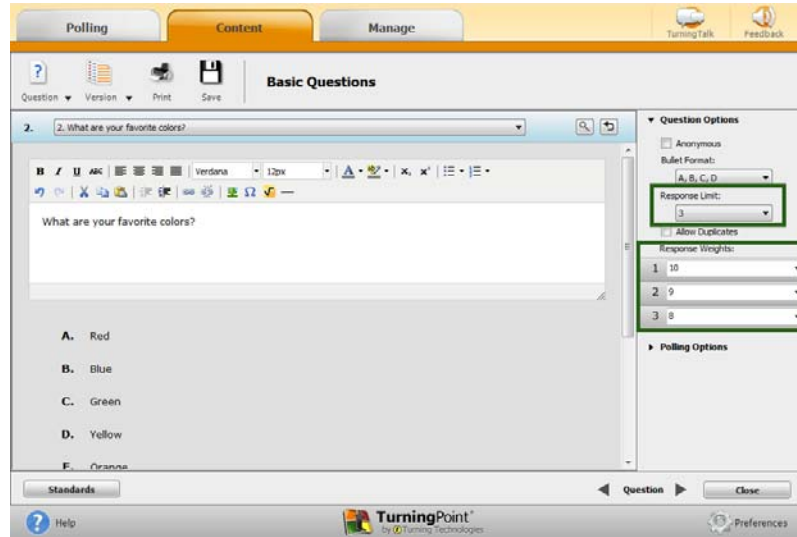
- 6 Click **Close**.
- 7 Click **Save and Close**.

QUESTION LIST: PRIORITY RANKING

A priority ranking question weighs the participants' choices and then ranks them accordingly. By default, the first answer choice is weighted with 10 points, second answer choice with nine points, third answer choice with eight answer points and so on.

- 1 From the **Content** tab, click the **Content drop-down menu**, mouse over **New** and select **Question List**.
- 2 Name the question list and click **Save**.
- 3 Select **Priority Ranking** from the Question Type drop-down menu.
- 4 Enter the **question text** and **answer choices**.
- 5 Select the **number of responses** permitted.

- 6 Optionally, adjust the **response weights**.



- 7 Click **Close**.
- 8 Click **Save and Close**.