

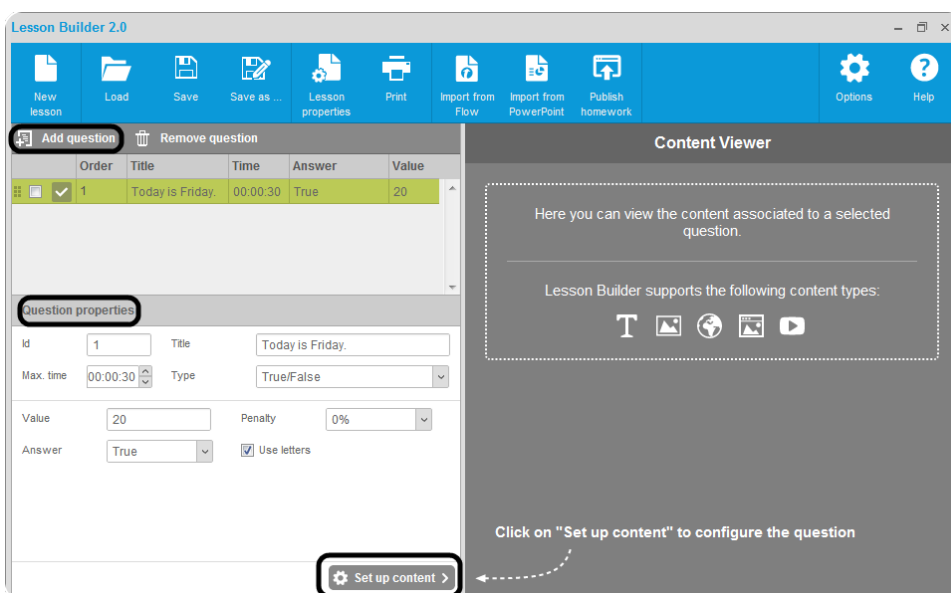
USING THE LESSON BUILDER AND HOMEWORK MODE IN FLOW






Lesson Builder installs with Flow as a supplemental application that allows you to create, modify and adapt a Flow lesson that you can display in homework or presentation mode. When Flow and Lesson Builder install, a shortcut to Lesson Builder will be made available on your Desktop (PC)/in the Finder (Mac)/in Dash Home (Linux).

Adding a Question in the Lesson Builder

Follow the steps below to add a question in the Lesson Builder.

- 1 Open the Lesson Builder .
- 2 Within the *Question Properties* section, enter the question parameters using the fields and drop-down menus provided.



- 3 Click **Set up content**.
The *Content editor* opens.
 - a Click **Text**  from the left panel to add text to the question.
 - b Click **Image**  from the left panel to add an image to the question.
 - c Click **Image URL**  from the left panel to add an image url to the question.
 - d Click **HTML URL**  from the left panel to add a hyperlink to the question.
 - e Click **YouTube URL**  from the left panel to add a link to a YouTube video to the question.
- 4 Click **Save**.
- 5 Click **Add question** to insert another question.
- 6 Repeat **steps 2 - 5** as necessary.
- 7 Click the **Save** or **Save as** icon to save the new lesson.

Homework

A Flow lesson can be published as a homework assignment. The homework assignment must be completed within one (1) month of publication.

IMPORTANT

Homework mode is only compatible with the vPad application.

Publishing Homework via the Lesson Builder

- 1 Open the Lesson Builder.
- 2 Load a **lesson file**.
- 3 After the lesson is created or loaded, click the **Publish homework** icon.
The *Homework* window opens.
- 4 Enter your **name** in the *Instructor name* field.
- 5 Enter your **class name** in the *Class name* field.
- 6 Enter your **e-mail address** in the *Instructor e-mail* field.
Optionally, enter a **homework description** in the *Description* field.
- 7 Enter the **Homework ID prefix**; i.e. HIS (for history).
- 8 Enter a **password** with a minimum of six (6) alpha-numeric characters in the *Password* field.
- 9 Enter the **completion date** in the *Date limit* field.
- 10 Click **Start Upload**.
You will receive an e-mail confirmation containing the Homework ID and password.

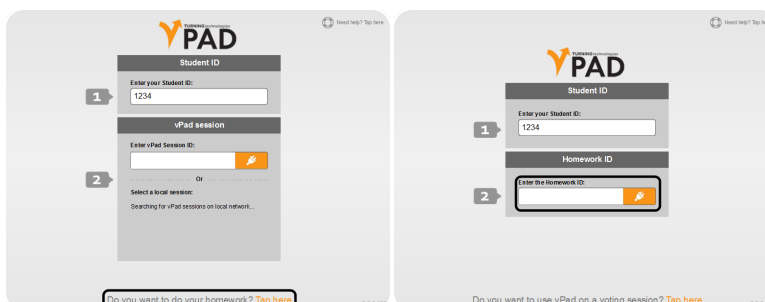
Assigning and Completing Homework

After you have published the homework assignment to the Turning Technologies server, it is accessible for one (1) month via the Homework ID provided in the auto-generated e-mail sent to you from Turning Technologies.

- 1 Provide participants with the **Homework ID**.
- 2 Prompt participants to login using their vPads.

NOTE

Participants must tap *Do you want to do your homework? Tap here* at the bottom of the vPad login screen to switch to Homework Mode.




- 3 After participants have logged in using their vPads, the homework assignment is displayed.

NOTE

Once the homework is loaded onto the device, participants can complete the assignment offline if necessary and upload the assignment at a later time when a network is available.

Downloading and Viewing Completed Homework

Follow the steps below when you are ready to download and view homework results.

- 1 Open Flow.
- 2 Click the **Options**  icon and select **Load homework**.
- 3 Enter the **Homework ID** for the assignment in the *ID* field and the **password** in the *Password* field.
- 4 Click **Download**.
- 5 The results are imported into Flow.
- 6 Click **Session results** to view the lesson.