

TurningPoint AnyWhere Additional Topics

Demographics

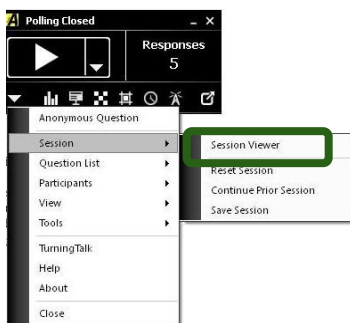
Tracking demographics allows you to group learners by marking a standard question slide as a demographic slide. Results from demographic slides will generate demographic reports.

Demographics While Polling Verbal Questions/Over Another Application

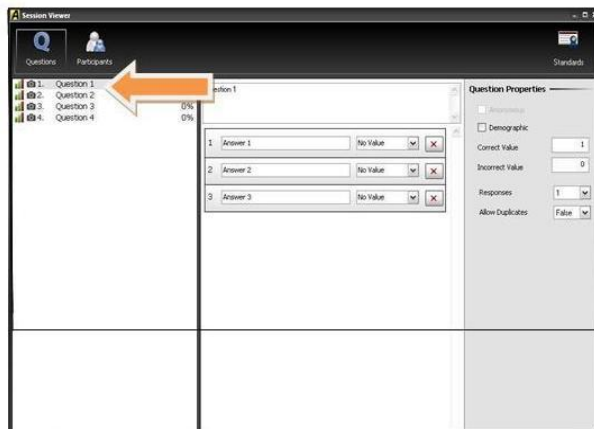
After the Presentation

Once your entire presentation is complete, you will then have the option of marking question(s) as demographics.

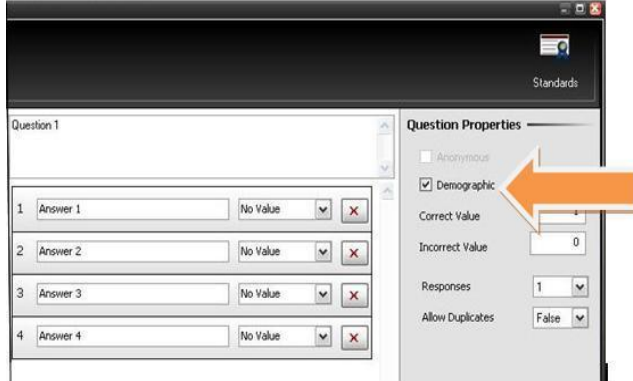
- 1 Once all of your questions are complete, click on the main menu drop-down arrow located in the lower left-hand corner of the floating showbar.



- 2 Scroll down to the second option titled "session."
- 3 Select "Session Viewer" from the secondary drop-down menu.
- 4 Once the Session Viewer opens, select the question that you would like to mark as a demographic.



- 5 Checkmark the box titled “Demographic” located on the right-hand side of the screen.



- 6 You can generate demographic reports.

Demographics While Polling with a Question List

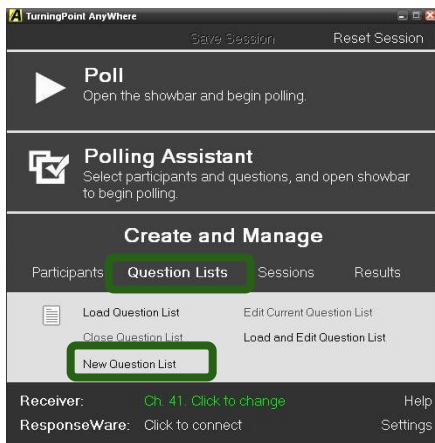
Before the Presentation

As you are creating your question list, you can designate the question(s) you wish to use as demographic question(s).

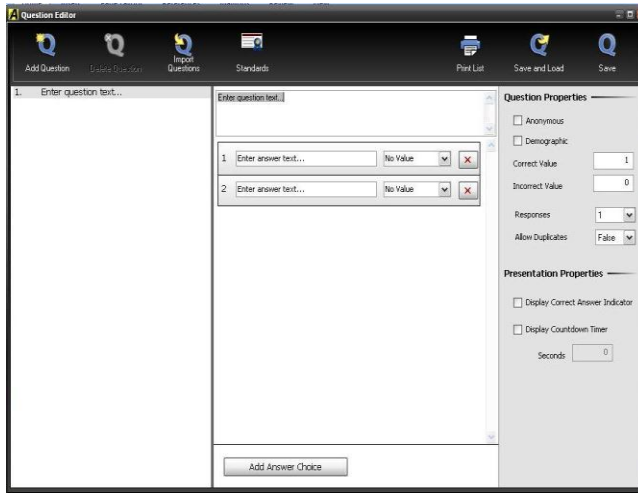
- 1 Open the TurningPoint AnyWhere software.



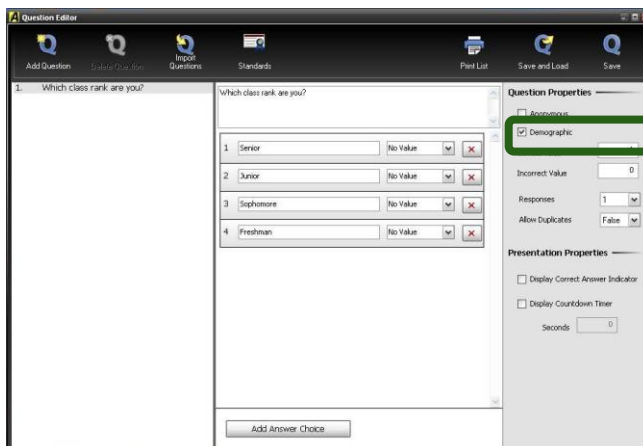
- 2 Once the Launchpad opens, select “Question List” under the “Create and Manage” category.



3 Select "New Question List."



4 Once you insert the question that you want to be a demographic, checkmark the box "Demographic" located on the right-hand side of the screen within the "Question Properties" area.



5 After you run your presentation with a question list you can generate demographic reports.

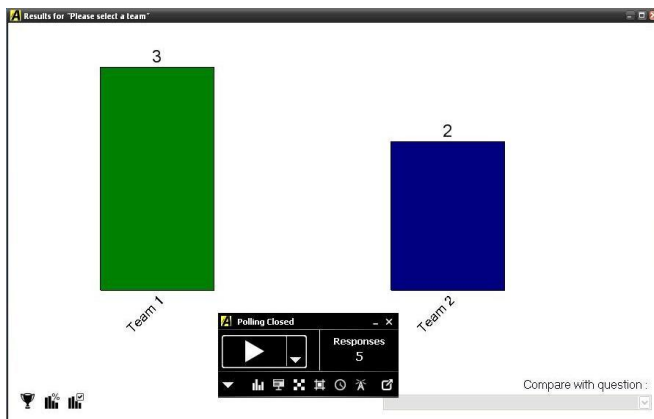
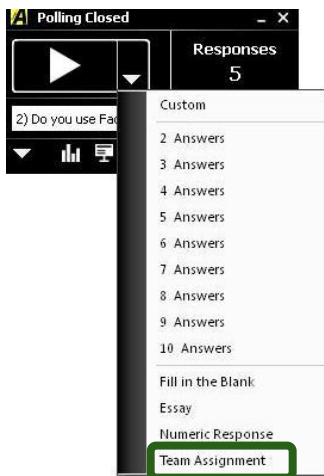
Competitions

TurningPoint AnyWhere will allow you to facilitate both individual and/or team competitions within the same session.

Polling Verbal Questions and Over Another Application

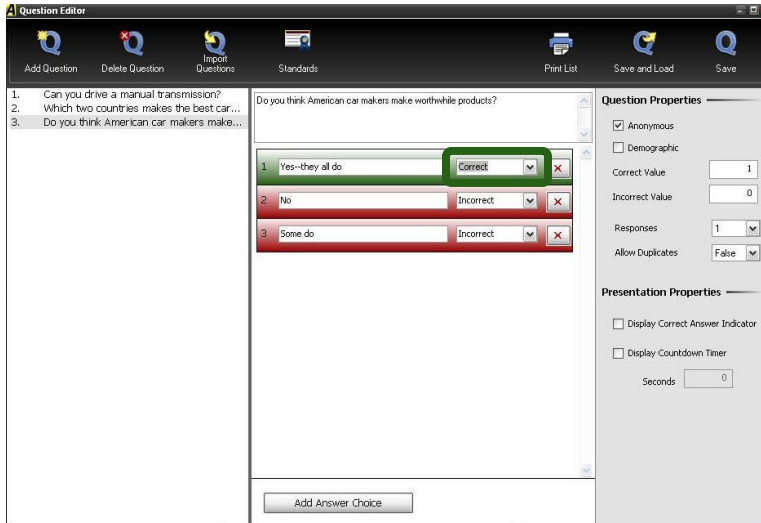
During the Presentation: Assign Teams

- 1 Assign teams by selecting the "Poll Menu" drop-down arrow and "Team Assignment" at the bottom of window.
 - The number a participant chooses during the team assignment verbal question will be the number of the team in which they are placed during the session.

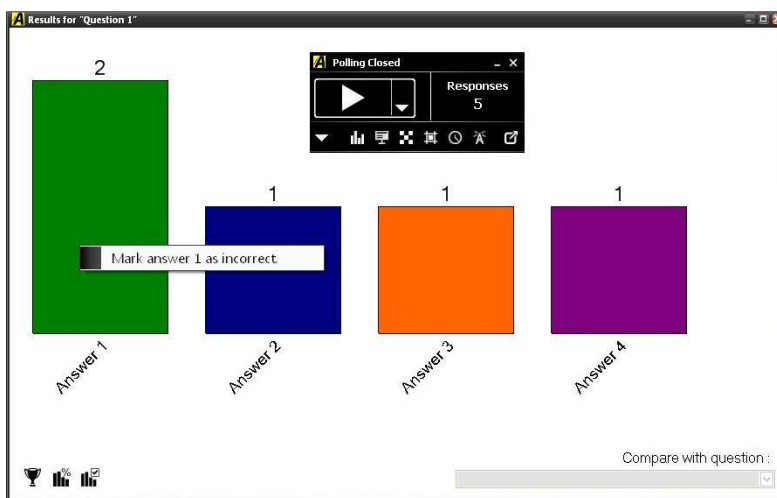


Ask Competition Questions

- 1 If using a question list, set correct answers during question creation so points can be gained while in competition.



- 2 If you are polling with verbal questions or over top of another application, assign a correct answer after polling is closed by right-clicking on top of the chart that designates the correct choice.

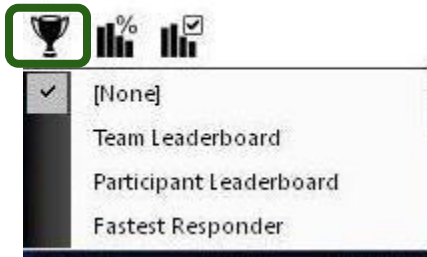


Display Team and Individual Leader Boards

- 1 Once polling closes, select the trophy icon located in the lower left-hand corner of the chart window to show the updated team and individual leader boards as well as fastest responders.

Note

Fastest responder slides display the responder with the correct and fastest response from the previous question asked.



Team Leader Board

Score	Team		
2.5	Team 2		
2	Team 1		

Team Leaderboard

Polling Closed

Responses: 5

Participant Leader Board

Score	Participant		
4	Participant 90278C		
3	Participant 90271E		
3	Participant 902750		
3	Participant 902715		
2	Participant 902794		

Participant Leaderboard

Polling Closed

Responses: 4

Fastest Responders

Time	Participant		
1.53	Participant 90278C		
2.11	Participant 90271E		
2.8	Participant 902715		

Comparisons

TurningPoint AnyWhere will allow you to compare the results of one question with a question you previously polled to analyze the two sets of results.

During the Presentation

- 1 Poll at least two questions within your session.
- 2 After polling closes on a question, select "Compare with Question" located in the lower right-hand corner of the chart window.

Compare with question :

(None) ▼

(None)

Question 1

Note

The chart on the left displays results from the first question. The chart on the right displays results from the second question.

