

Setting Up an Offline Password

To use TurningPoint Cloud when you are not connected to the internet, you must set up an offline password.

NOTE


Setting up an offline password is not available to Single Sign-On users.

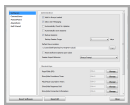
IMPORTANT

When you are signed in to TurningPoint Cloud offline, online features (ResponseWare and Integrations) will not be available.



Prerequisites

You must be connected to the internet to set up your offline password.

- 1 Open TurningPoint Cloud and sign in to your Turning Account.
- 2 Click  on the bottom right corner of the Dashboard. The *Preferences* window opens.



Optionally, the *Preferences* window can be accessed through any of the polling environments.

- To open Preferences in the PowerPoint polling environment, click  on the TurningPoint Cloud ribbon.
- To open Preferences in the Anywhere polling environment, click  and select **Preferences**.
- To open Preferences in the Self-Paced polling environment, click **Tools** on the menu bar and select **Preferences**.

- 3 Click **Set Password**.
- 4 Enter and confirm your **offline password** in the boxes provided.

NOTE

Your password must contain a minimum of eight characters including one upper case, one lower case and one number.

- 5 Click **Set**.
- 6 Click **Close** to return to the TurningPoint Cloud Dashboard.

